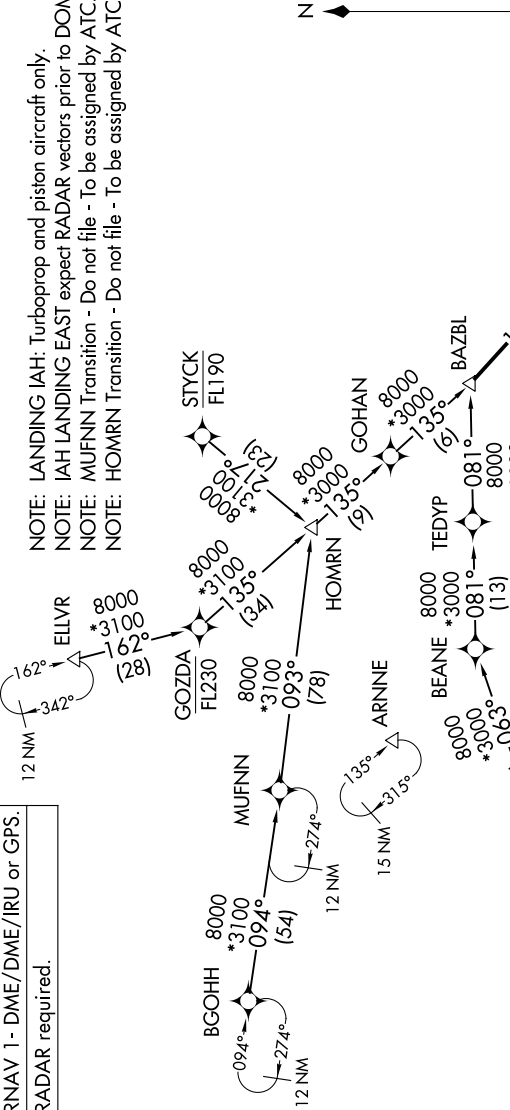


920Z TUE 60 01 2026 TUE 11 '9-C-S

RNAV 1- DME/DME/IRU or GPS.
RADAR required.

HOUSTON APP CON
134.3 360.85
CXO ATIS
118.325
DWH ATIS
128.375
IAH D-ATIS
124.05

NOTE: LANDING IAH: Turboprop and piston aircraft only.
NOTE: IAH LANDING EAST expect RADAR vectors prior to DOMNO.
NOTE: MUFNN Transition - Do not file - To be assigned by ATC.
NOTE: HOMRN Transition - Do not file - To be assigned by ATC.



ARRIVAL ROUTE DESCRIPTION

BGOHH TRANSITION (BGOHH.BAZBL1)
 ELLVR TRANSITION (ELLVR.BAZBL1)
 HOMRN TRANSITION (HOMRN.BAZBL1)
 IILEXY TRANSITION (IILEXY.BAZBL1)
 MUFNN TRANSITION (MUFNN.BAZBL1)
 STYCK TRANSITION (STYCK.BAZBL1)

IAH: From BAZBL on track 129° to MPORT.
 LANDING IAH RUNWAYS 8L/R, 9, 15L/R, 26L/R, 27, 33L/R: From MPORT on track 137° to DOMNO, then on track 087° to SKLER, then on track 087°.
 Expect RADAR vectors to final approach course.
 LANDING CXO/DWH/T78/6R3: From BAZBL on track 129° to MPORT, then on track 137° to MITRSS, then on track 137°.

NOTE: Chart not to scale.

SC-5, 11 JUN 2026 to 09 JUL 2026