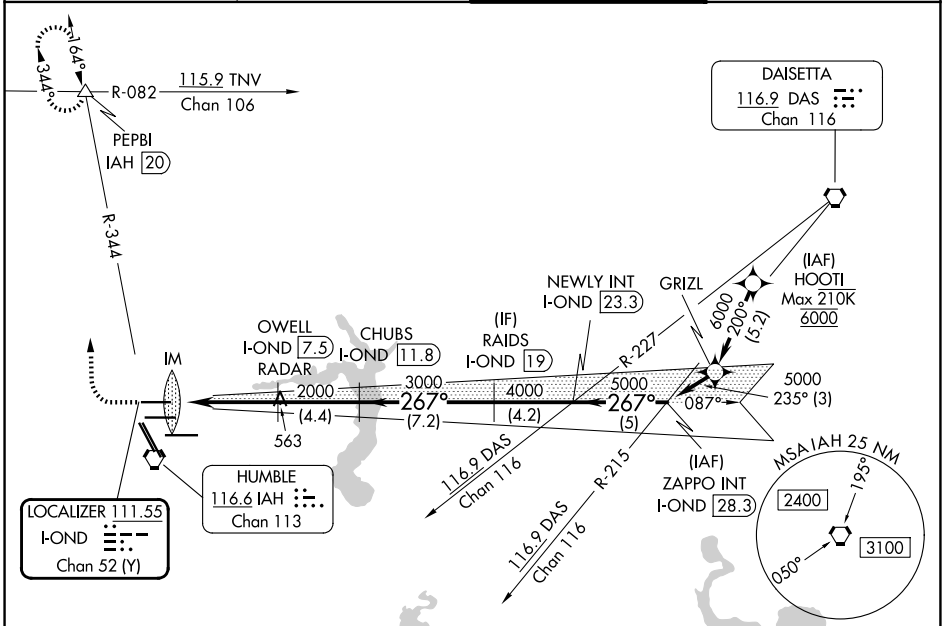


LOC/DME I-OND <b>111.55</b> Chan <b>52 (Y)</b>	APP CRS <b>267°</b>	Rwy Ldg <b>9000</b> TDZE <b>95</b> Apt Elev <b>96</b>
--	------------------------	---

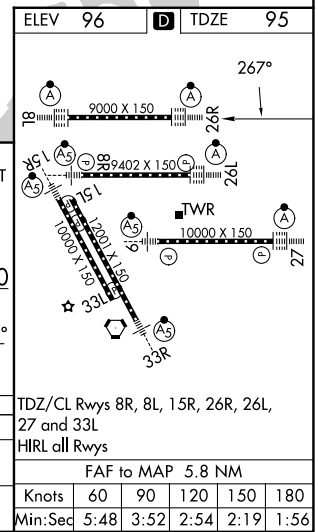
# ILS or LOC RWY 26R

GEORGE BUSH INTCNL/HOUSTON (IAH)

DME required. From HOOIT: RNAV 1-GPS required.		ALSF-2 	MISSED APPROACH: Climb to 600 then climbing right turn to 3000 on IAH VORTAC R-344 to PEPBI INT/IAH 20 DME and hold.
Simultaneous approach authorized with Rwy 26L and Rwy 27. For inop ALS, increase S-ILS 26R Cat E visibility to RVR 4000, and S-LOC 26R Cat C/D/E visibility to 1 1/8 SM.			
D-ATIS <b>124.05</b>	HOUSTON APP CON <b>120.05 379.1 E</b> <b>124.35 316.15 W</b>	HOUSTON TOWER <b>120.725 290.2</b>	GND CON <b>118.575</b>



ELEV 96	<b>D</b> TDZE 95							
600	3000	PEPBI	OWELL I-OND 7.5 RADAR	CHUBS I-OND 11.8	RAIDS I-OND 19	NEWLY INT I-OND 23.3	ZAPPO INT I-OND 28.3	
* LOC only		IM						
CATEGORY	A	B	C	D	E			
S-ILS 26R	295/18		200 (200-1/2)					
S-LOC 26R	580/24	485 (500-1/2)	580/50		485 (500-1)			



SC-5, 11 JUN 2026 to 09 JUL 2026

SC-5, 11 JUN 2026 to 09 JUL 2026