

LOC/DME I-GHI 110.9 Chan 46	APP CRS 267°	Rwy Ldg 10000 TDZE 86 Apt Elev 96
---	------------------------	--

ILS or LOC RWY 27

GEORGE BUSH INTCNL/HOUSTON (IAH)

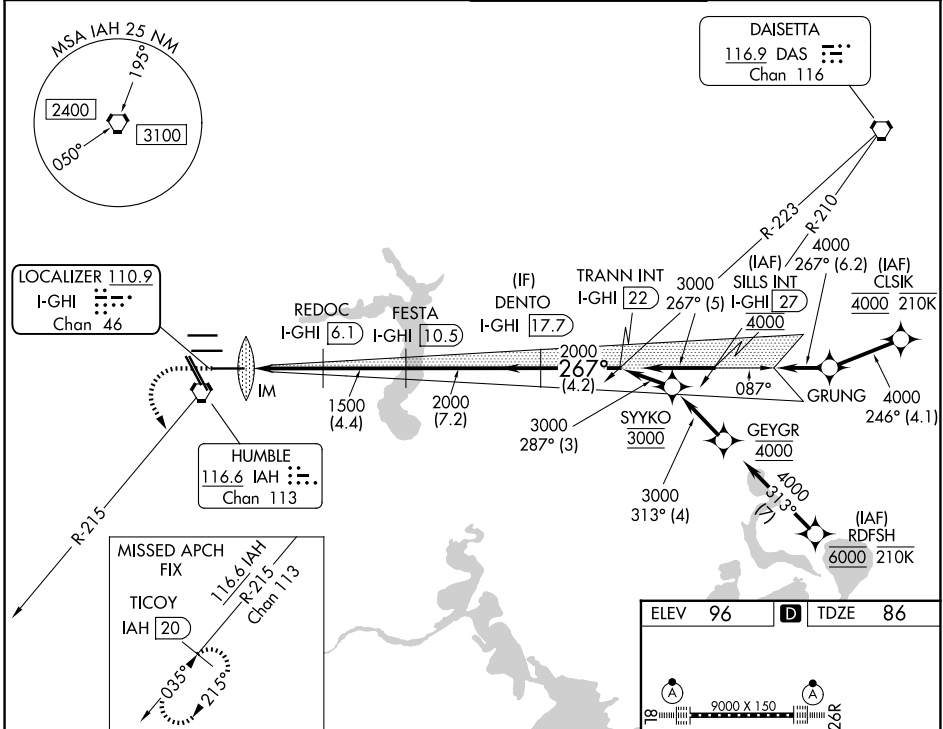
RNAV 1-GPS or RADAR required for procedure entry.
DME required.

Simultaneous approach authorized. Use of FD or AP required during simultaneous operations. For inop ALS, increase S-ILS 27 Cat E visibility to RVR 4000 and S-LOC 27 Cat C-E visibility to 1 1/2 SM.

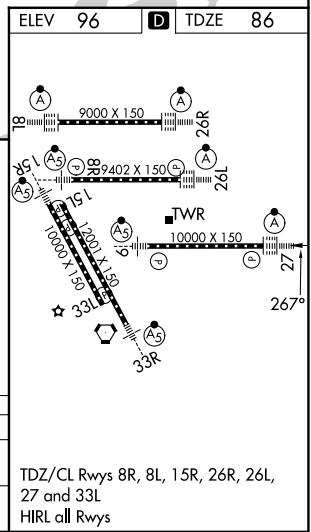
ALSF-2

MISSED APPROACH: Climb to 560 then climbing left turn to 3000 on IAH VORTAC R-215 to TICCOY/IAH 20 DME and hold.

D-ATIS 124.05	HOUSTON APP CON 120.05 379.1 E 124.35 316.15 W	HOUSTON TOWER 135.15 290.2	GND CON 118.575
-------------------------	--	--------------------------------------	---------------------------



560	3000	TICCOY IAH 20	VGSi and ILS glidepath not coincident (VGSi Angle 3.00/TCH 70).			TRANN INT I-GHI [22]
IM	I-GHI [1.8]	I-GHI [3.1]	REDOC I-GHI [6.1]	FESTA I-GHI [10.5]	DENTO I-GHI [17.7]	3000
0.1	1.2	3 NM	4.4 NM	7.2 NM	4.2 NM	GS 3.00° TCH 55
CATEGORY	A	B	C	D	E	
S-ILS 27	286/18 200 (200-1/2)					
S-LOC 27	560/24	474 (500-1/2)	560/50 474 (500-1)			



SC-5, 11 JUN 2026 to 09 JUL 2026

SC-5, 11 JUN 2026 to 09 JUL 2026