

LOC I-CDG <b>111.9</b>	APP CRS <b>329°</b>	Rwy 33R Ldg <b>12001</b> TDZE <b>89</b> Apt Elev <b>96</b>	Rwy 33L Ldg <b>10000</b> TDZE <b>90</b> Apt Elev <b>96</b>
---------------------------	------------------------	--	--

# ILS or LOC RWY 33R

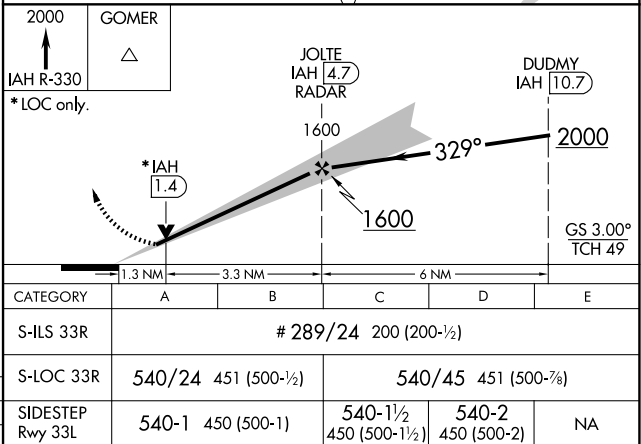
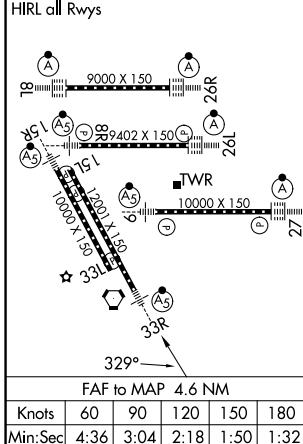
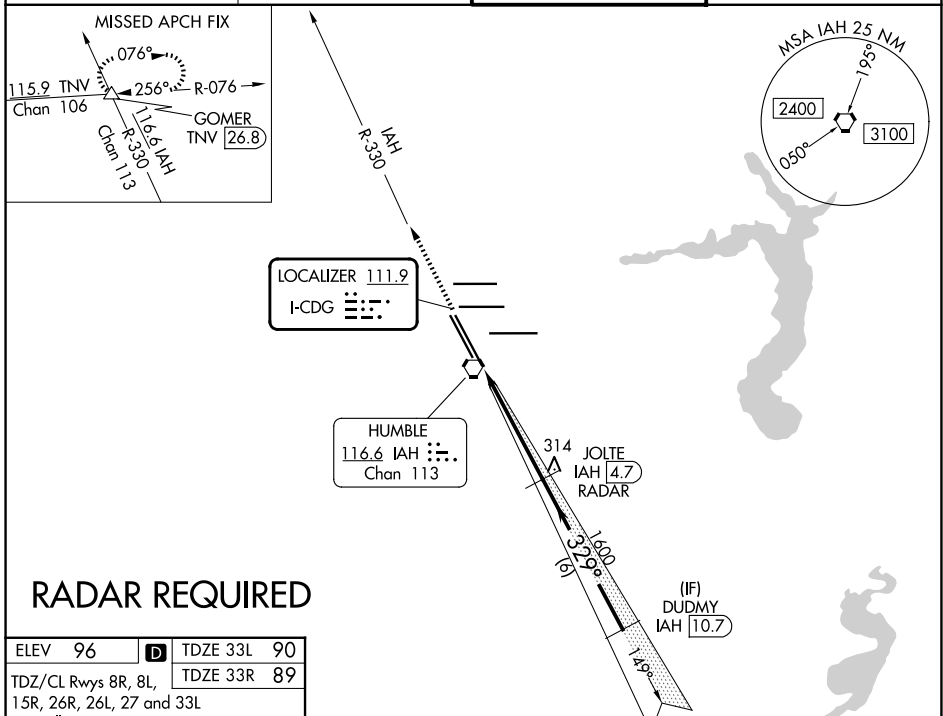
GEORGE BUSH INTCNL/HOUSTON (IAH)

**▼** DME from IAH VORTAC. Simultaneous reception of I-CDG and IAH DME Required. For inop MALSRR, increase S-ILS 33R Cat E visibility to RVR 4000 and S-LOC 33R Cat E visibility to 1 3/8 mile. DME or RADAR Required. #RVR 1800 authorized with the use of FD or AP or HUD to DA.

MALSRR

MISSED APPROACH: Climb to 2000 on IAH VORTAC R-330 to GOMER INT/TNV 26.8 DME and hold.

D-ATIS <b>124.05</b>	HOUSTON APP CON <b>120.05 379.1 E</b> <b>124.35 316.15 W</b>	HOUSTON TOWER <b>127.3 288.25</b>	GND CON <b>121.7</b>
-------------------------	--	--------------------------------------	-------------------------



SC-5, 11 JUN 2026 to 09 JUL 2026

SC-5, 11 JUN 2026 to 09 JUL 2026