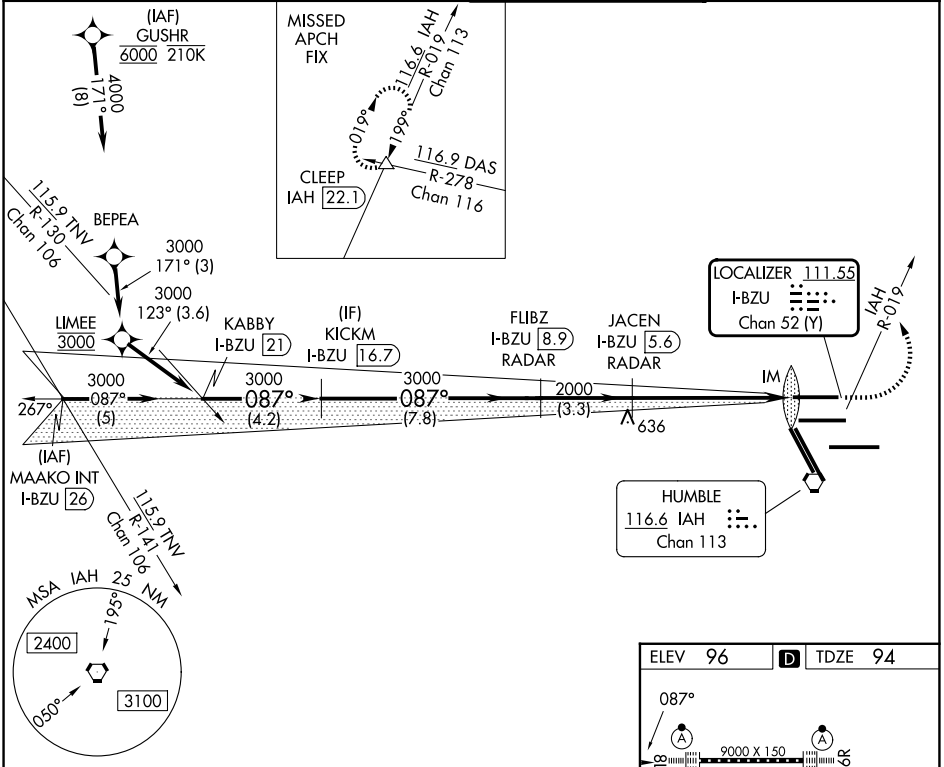


LOC/DME I-BZU <b>111.55</b>	APP CRS <b>087°</b>	Rwy Ldg TDZE Apt Elev	<b>9000</b> <b>94</b> <b>96</b>
Chan <b>52 (Y)</b>			

# ILS or LOC RWY 8L

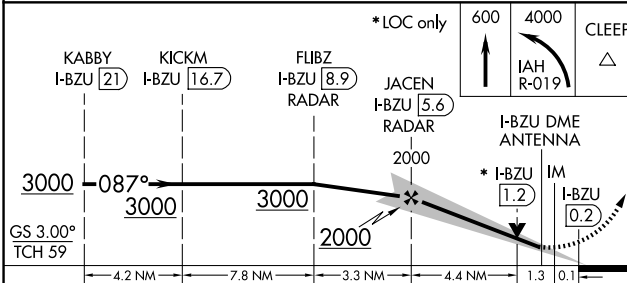
GEORGE BUSH INTCNL/HOUSTON (IAH)

DME required. From GUSHR. RNAV 1-GPS required.		ALSF-2	MISSED APPROACH: Climb to 600 then climbing left turn to 4000 on IAH VORTAC R-019 to CLEEP INT/IAH 22.1 DME and hold.
Simultaneous approach authorized with Rwy 8R and Rwy 9.			
D-ATIS <b>124.05</b>	HOUSTON APP CON <b>120.05 379.1 E</b> <b>124.35 316.15 W</b>	HOUSTON TOWER <b>120.725 290.2</b>	GND CON <b>118.575</b>



SC-5, 11 JUN 2026 to 09 JUL 2026

SC-5, 11 JUN 2026 to 09 JUL 2026



ELEV 96	D	TDZE 94
TDZ/CL Rwys 8R, 8L, 15R, 26R, 26L, 27 and 33L HIRL all Rwys		
FAF to MAP 5.8 NM		
Knots	60	90 120 150 180
Min:Sec	5:48	3:52 2:54 2:19 1:56

CATEGORY	A	B	C	D	E
S-ILS 8L	294/18		200 (200-½)		
S-LOC 8L	600/24	506 (600-½)	600/55	506 (600-1)	