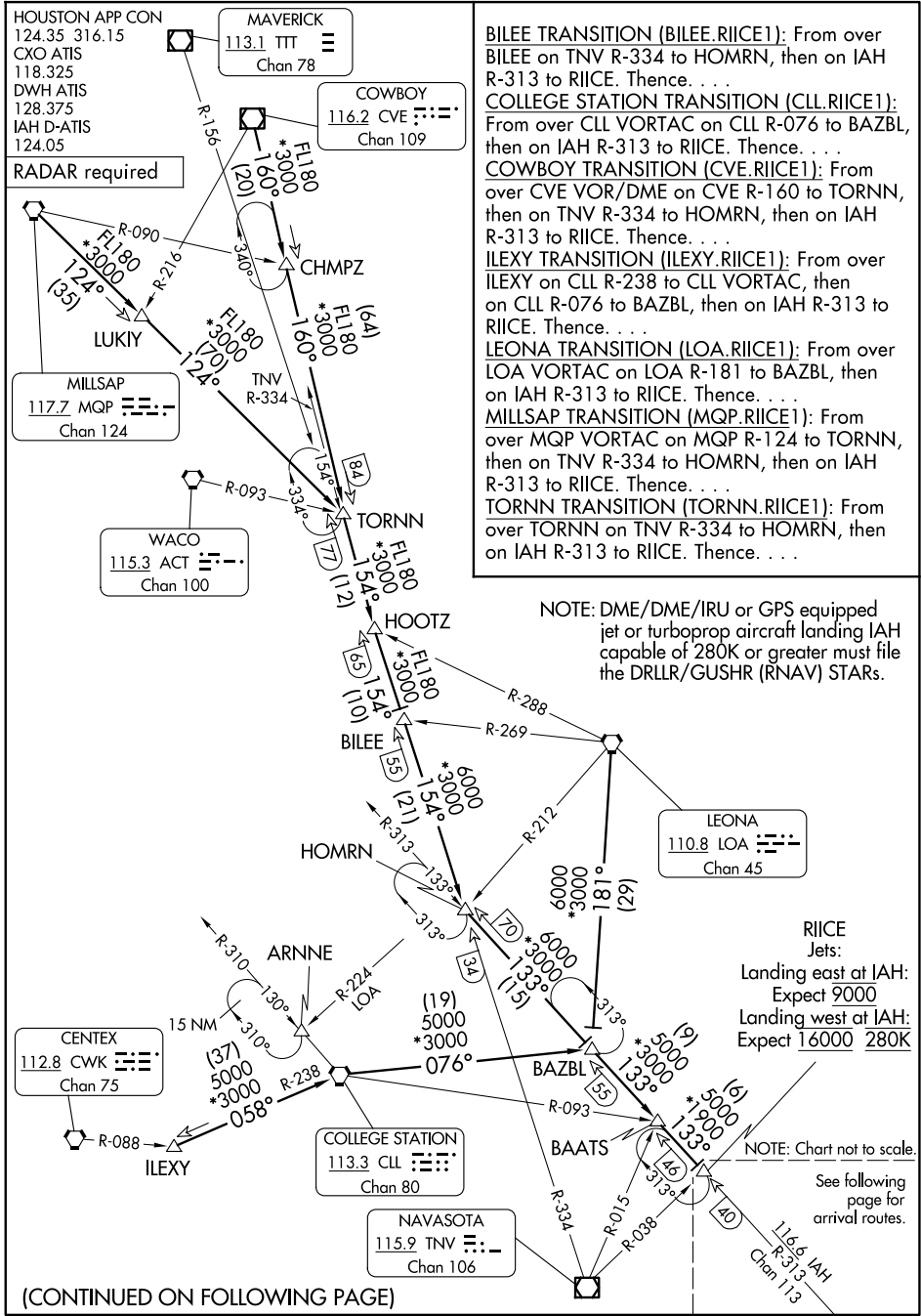


RIICE ONE ARRIVAL

Transition Routes

HOUSTON, TEXAS



BILEE TRANSITION (BILEE.RIICE1): From over BILEE on TNV R-334 to HOMRN, then on IAH R-313 to RIICE. Thence. . . .

COLLEGE STATION TRANSITION (CLL.RIICE1): From over CLL VORTAC on CLL R-076 to BAZBL, then on IAH R-313 to RIICE. Thence. . . .

COWBOY TRANSITION (CVE.RIICE1): From over CVE VOR/DME on CVE R-160 to TORNN, then on TNV R-334 to HOMRN, then on IAH R-313 to RIICE. Thence. . . .

IILEXY TRANSITION (IILEXY.RIICE1): From over IILEXY on CLL R-238 to CLL VORTAC, then on CLL R-076 to BAZBL, then on IAH R-313 to RIICE. Thence. . . .

LEONA TRANSITION (LOA.RIICE1): From over LOA VORTAC on LOA R-181 to BAZBL, then on IAH R-313 to RIICE. Thence. . . .

MILLSAP TRANSITION (MQP.RIICE1): From over MQP VORTAC on MQP R-124 to TORNN, then on TNV R-334 to HOMRN, then on IAH R-313 to RIICE. Thence. . . .

TORNNN TRANSITION (TORNNN.RIICE1): From over TORNNN on TNV R-334 to HOMRN, then on IAH R-313 to RIICE. Thence. . . .

NOTE: DME/DME/IRU or GPS equipped jet or turboprop aircraft landing IAH capable of 280K or greater must file the DRLLR/GUSHR (RNAV) STARS.

RIICE Jets:
 Landing east at IAH: Expect 9000
 Landing west at IAH: Expect 16000 280K

NOTE: Chart not to scale.
 See following page for arrival routes.

(CONTINUED ON FOLLOWING PAGE)

RIICE ONE ARRIVAL

Transition Routes

HOUSTON, TEXAS

SC-5, 11 JUN 2026 to 09 JUL 2026

SC-5, 11 JUN 2026 to 09 JUL 2026