

WAAS CH <b>72912</b> <b>W24A</b>	APP CRS <b>246°</b>	Rwy Ldg TDZE Apt Elev	<b>3801</b> <b>635</b> <b>635</b>
--	------------------------	-----------------------------	---

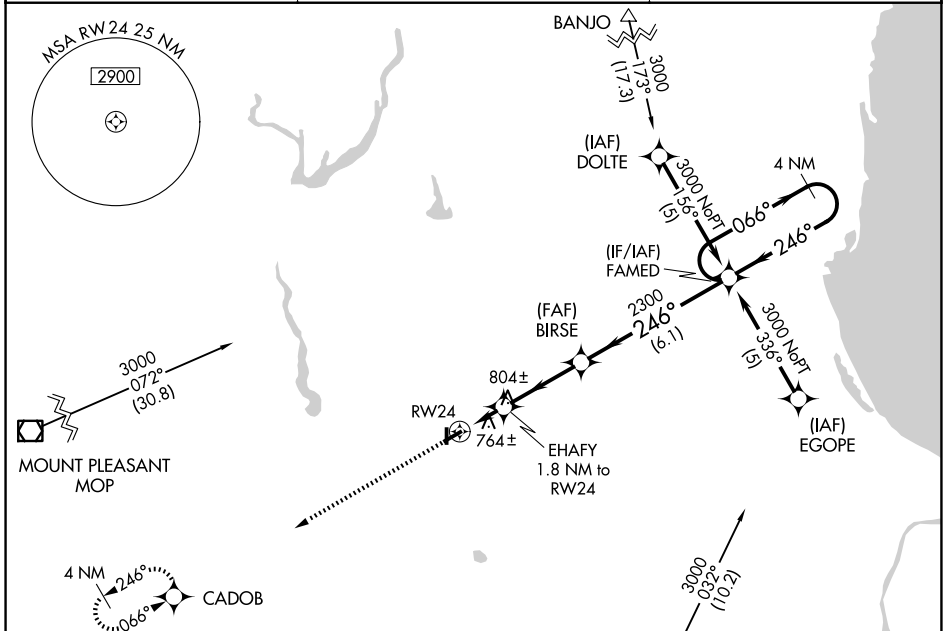
# RNAV (GPS) RWY 24

JACK BARSTOW (IKW)

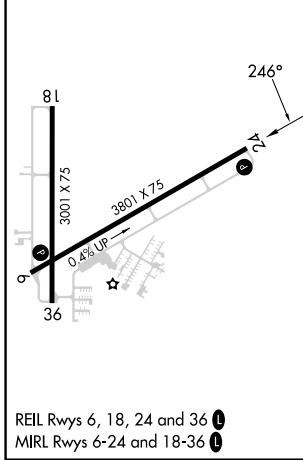
**⚠** Baro-VNAV NA when using MBS Intl altimeter setting. For uncompensated Baro-VNAV systems, LNAV/VNAV NA below -16°C (4°F) or above 54°C (130°F). DME/DME RNP-0.3 NA. Rwy 24 helicopter visibility reduction below ¾ SM NA. When local altimeter setting not received, use MBS Intl altimeter setting and increase all DA 31 feet and all MDA 40 feet and all LPV visibility ¼ mile. Circling Rwy 18, 36 NA at night.

**MISSED APPROACH:**  
Climb to 3000 direct CADOB and hold.

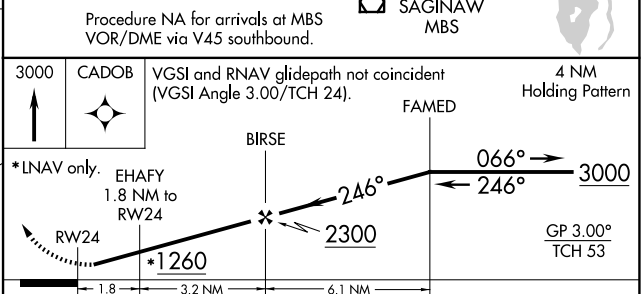
AWOS-3P <b>119.525</b>	GREAT LAKES APP CON ★ <b>126.45 235.625</b>	UNICOM <b>122.8 (CTAF) 0</b>
---------------------------	--	---------------------------------



ELEV <b>635</b>	TDZE <b>635</b>
-----------------	-----------------



REIL Rwy 6, 18, 24 and 36 **0**  
MIRL Rwy 6-24 and 18-36 **0**



CATEGORY	A	B	C	D
LPV DA		1021-1¼ 386 (400-1¼)		NA
LNAV/VNAV DA		1068-1½ 433 (500-1½)		NA
LNAV MDA	1060-1	425 (500-1)	1060-1¼ 425 (500-1¼)	NA
CIRCLING	1120-1	485 (500-1)	1240-1¾ 605 (700-1¾)	NA

EC-1, 11 JUN 2026 to 09 JUL 2026

EC-1, 11 JUN 2026 to 09 JUL 2026