

|  |                        |   |
|--|------------------------|---|
| WAAS<br>CH <b>53418</b><br><b>W20A</b> | APP CRS<br><b>197°</b> | Rwy Ldg<br>TDZE <b>373</b><br>Apt Elev <b>373</b> |
|--|------------------------|---|

# RNAV (GPS) RWY 20

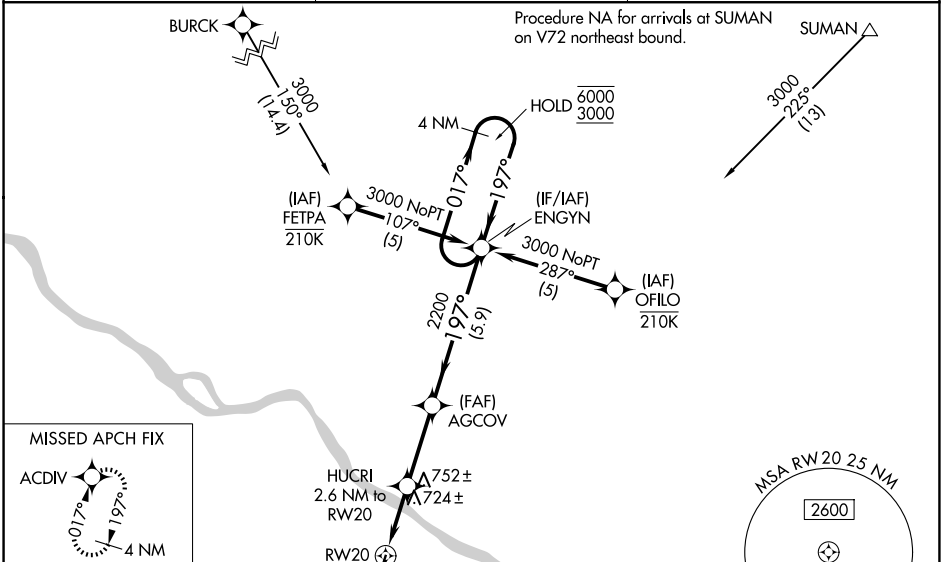
PERRYVILLE RGNL (PCD)

RNP APCH - GPS.

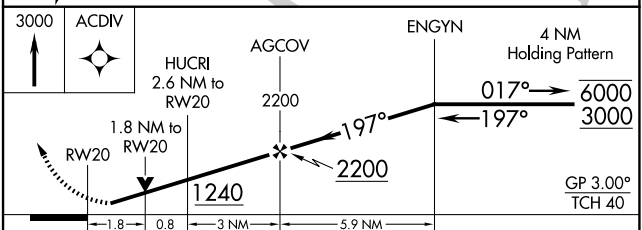
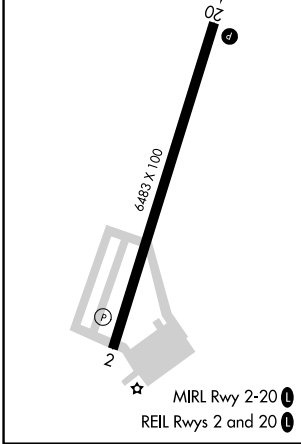
⚠ For uncompensated Baro-VNAV systems, LNAV/VNAV NA below -15°C or above 54°C. Baro-VNAV and VDP NA when using CGI altimeter setting. Rwy 20 helicopter visibility reduction below 3/4 SM NA. When local altimeter setting not received, use CGI altimeter setting and increase LPV DA to 723 feet; increase LNAV/VNAV DA to 746 feet; increase all MDAs 100 feet and LNAV visibility Cat C/D 1/4 SM, and Circling visibility Cat C 1/4 SM.

MISSED APPROACH: Climb to 3000 direct ACDIV and hold.

|                           |  |                                 |
|---------------------------|--|---------------------------------|
| AWOS-3PT<br><b>118.95</b> | KANSAS CITY CENTER<br><b>127.475 346.275</b> | UNICOM<br><b>122.8 (CTAF) 0</b> |
|---------------------------|--|---------------------------------|



|          |          |          |
|----------|----------|----------|
| ELEV 373 | <b>D</b> | TDZE 373 |
|----------|----------|----------|



| CATEGORY     | A                    | B                     | C                             | D                     |
|--------------|----------------------|-----------------------|-------------------------------|-----------------------|
| LPV DA       |                      | 623-1                 | 250 (300-1)                   |                       |
| LNAV/VNAV DA |                      | 646-1                 | 273 (300-1)                   |                       |
| LNAV MDA     | 980-1                | 607 (700-1)           | 980-1 3/4                     | 607 (700-1 3/4)       |
| CIRCLING     | 980-1<br>607 (700-1) | 1000-1<br>627 (700-1) | 1260-2 3/4<br>887 (900-2 3/4) | 1260-3<br>887 (900-3) |

NC-3, 11 JUN 2026 to 09 JUL 2026

NC-3, 11 JUN 2026 to 09 JUL 2026