

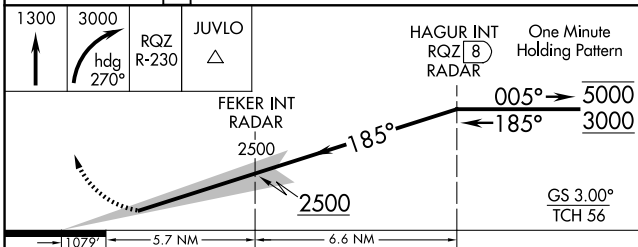
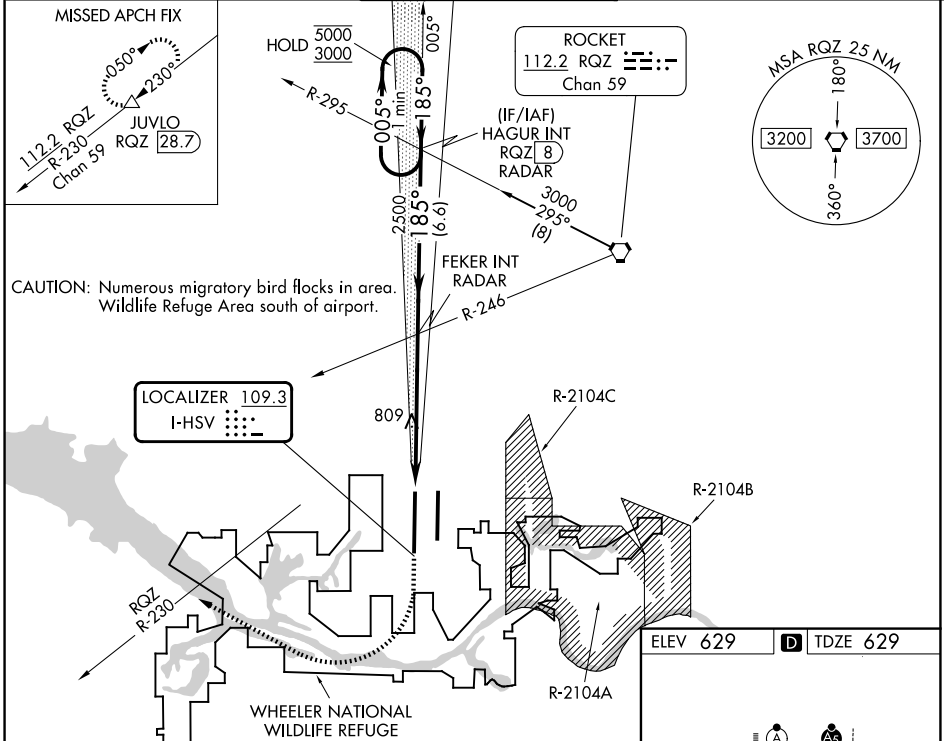
LOC I-HSV <b>109.3</b>	APP CRS <b>185°</b>	Rwy Ldg <b>12600</b>
		TDZE <b>629</b>
		Apt Elev <b>629</b>

# ILS RWY 18R (CAT II)

HUNTSVILLE INTL-CARL T JONES FLD (HSV)

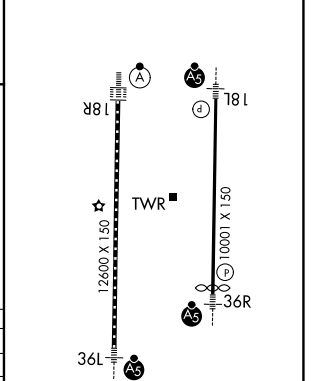
DME required. RADAR required for procedure entry.		ALSF-2	MISSED APPROACH: Climb to 1300 then climbing right turn to 3000 on heading 270° and RQZ R-230 to JUVLO/RQZ 28.7 DME and hold.

ATIS <b>121.25</b>	HUNTSVILLE APP CON★ <b>125.6 354.1</b>	HUNTSVILLE TOWER★ <b>127.6 (CTAF) 350.35</b>	GND CON <b>121.9 269.525</b>	UNICOM <b>122.95</b>
-----------------------	---	---	---------------------------------	-------------------------



CATEGORY	A	B	C	D
S-ILS 18R				
RA 105/12 100 DA 729				

ELEV 629	TDZE 629
----------	----------



**CATEGORY II ILS - SPECIAL AIRCREW & AIRCRAFT CERTIFICATION REQUIRED**

TDZL/RCLS Rwy 18R and 36L  
HIRL Rwy 18L-36R and 18R-36L

SE-4, 11 JUN 2026 to 09 JUL 2026

SE-4, 11 JUN 2026 to 09 JUL 2026