


LOC/DME I-ELL 108.5 Chan 22	APP CRS 005°	Rwy Ldg 12600 TDZE 616 Apt Elev 629
---	------------------------	--

ILS or LOC RWY 36L

HUNTSVILLE INTL-CARL T JONES FLD (HSV)

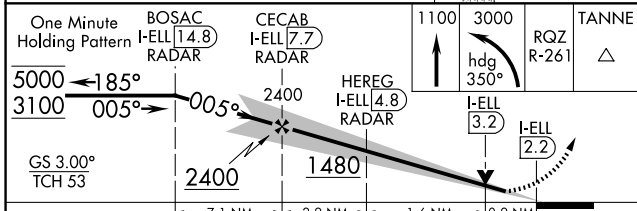
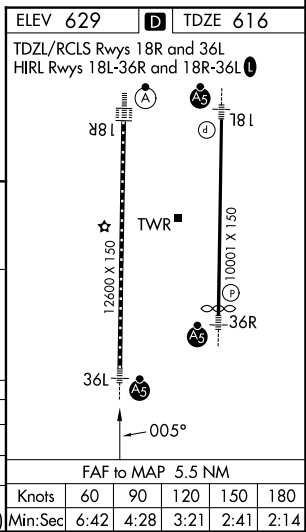
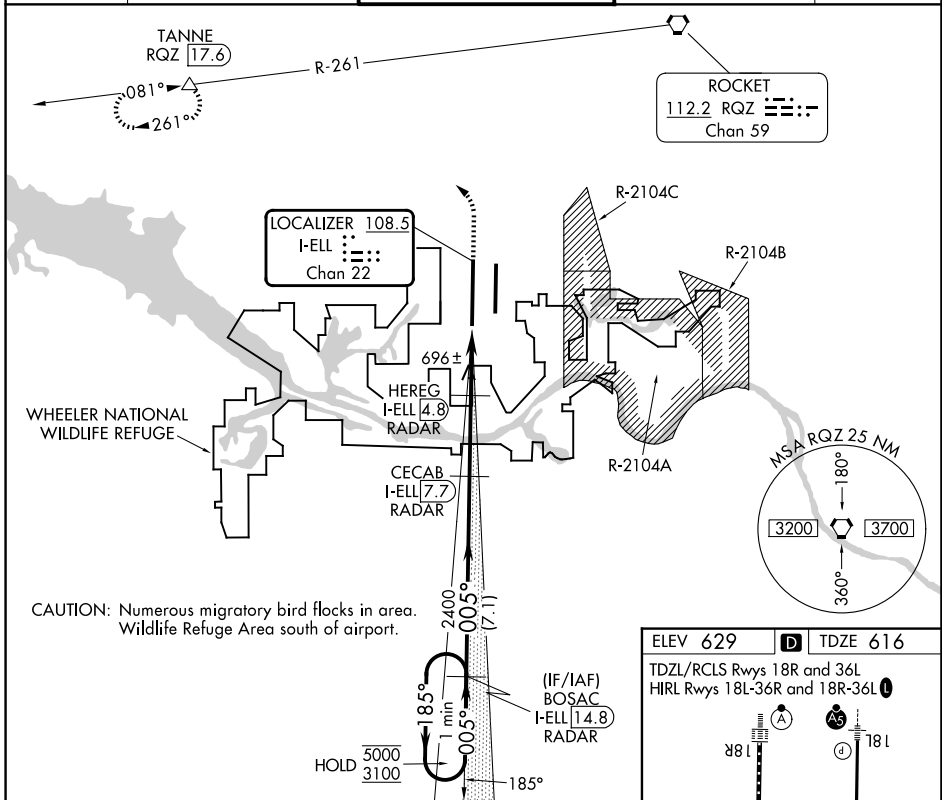
DME required. RADAR required for procedure entry.

ASR Circling NA for Cats C/D/E east of Rwy 18L-36R. Simultaneous approach authorized. For inop ALS, increase S-ILS 36L Cat E visibility to RVR 4000, S-LOC 36L Cat C/D/E visibility to RVR 5500. DME from RQZ VORTAC. DME use requires simultaneous reception of I-ELL and RQZ DME.

MALSR 

MISSED APPROACH: Climb to 1100 then climbing left turn to 3000 on heading 350° and RQZ R-261 to TANNE/RQZ 17.6 DME and hold.

ATIS 121.25	HUNTSVILLE APP CON★ 125.6 354.1	HUNTSVILLE TOWER★ 127.6 (CTAF) 350.35	GND CON 121.9 269.525	UNICOM 122.95
-----------------------	---	---	---------------------------------	-------------------------



CATEGORY	A	B	C	D	E
S-ILS 36L	816/18 200 (200-½)				
S-LOC 36L	960/24	344 (400-½)	960/30	344 (400-¾)	
CIRCLING	1160-1	531 (600-1)	1160-1½ 531 (600-½)	1240-2 611 (700-2)	1260-2¼ 631 (700-2¼)

SE-4, 11 JUN 2026 to 09 JUL 2026

SE-4, 11 JUN 2026 to 09 JUL 2026