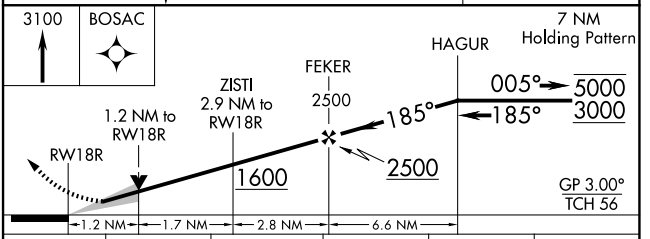
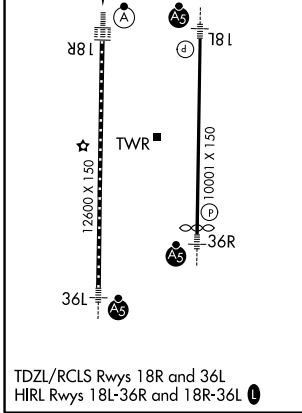
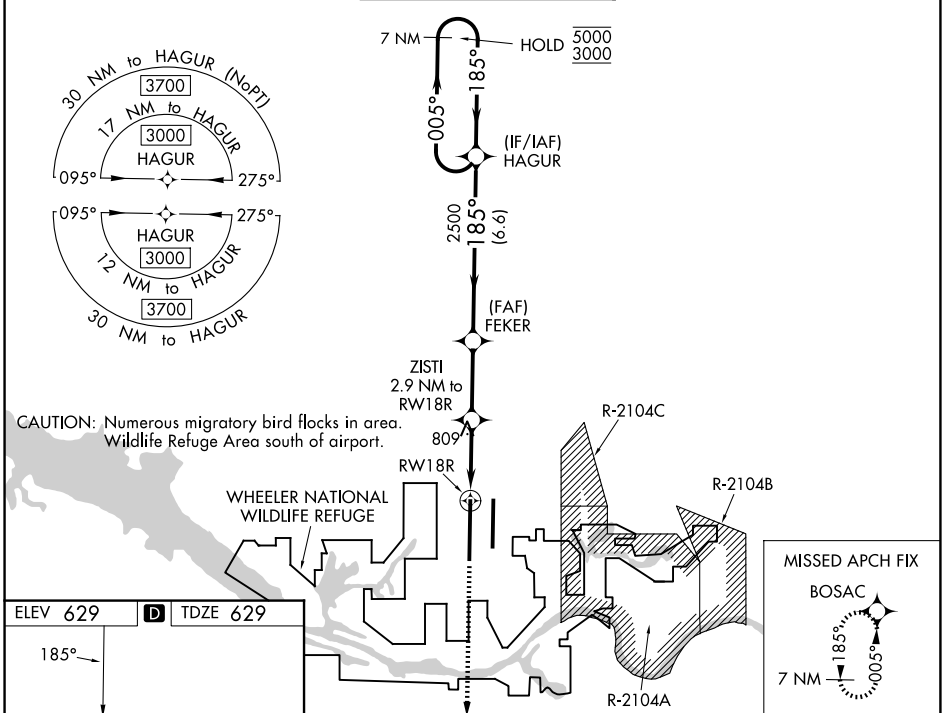


WAAS CH <b>58206</b> <b>W18B</b>	APP CRS <b>185°</b>	Rwy Ldg <b>12600</b> TDZE <b>629</b> Apt Elev <b>629</b>
----------------------------------------	------------------------	----------------------------------------------------------------

# RNAV (GPS) RWY 18R

HUNTSVILLE INTL-CARL T JONES FLD (HSV)

RNP APCH-GPS.		ALSIF-2		MISSED APPROACH: Climb to 3100 direct BOSAC and hold.	
<p><b>⚠</b> Circling NA for Cats C/D/E east of Rwy 18L-36R. Simultaneous approach authorized. LNAV procedure NA during simultaneous operations. Use of FD or AP required during simultaneous operations. For uncompensated Baro-VNAV systems, LNAV/VNAV NA below -8 °C or above 54°C. For inop ALS, increase LPV Cat E visibility to RVR 4000, LNAV/VNAV Cat E visibility to RVR 5000, and LNAV Cat E visibility to 1¼ SM.</p>					
ATIS <b>121.25</b>	HUNTSVILLE APP CON★ <b>125.6 354.1</b>	HUNTSVILLE TOWER★ <b>127.6 (CTAF) 350.35</b>	GND CON <b>121.9 269.525</b>	UNICOM <b>122.95</b>	



CATEGORY	A	B	C	D	E
LPV DA		829/18	200 (200-½)		
LNAV/VNAV DA		954/26	325 (400-½)		
LNAV MDA	1060/24	431 (500-½)	1060/40	431 (500-¾)	
CIRCLING	1160-1	531 (600-1)	1160-1½ 531 (600-1½)	1240-2 611 (700-2)	1260-2¼ 631 (700-2¼)

SE-4, 11 JUN 2026 to 09 JUL 2026

SE-4, 11 JUN 2026 to 09 JUL 2026