

VORTAC RMG <b>115.4</b> Chan 101	APP CRS <b>187°</b>	Rwy Idg TDZE Apt Elev <b>N/A</b> <b>N/A</b> <b>974</b>
--	------------------------	---

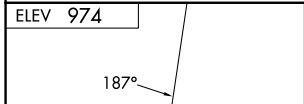
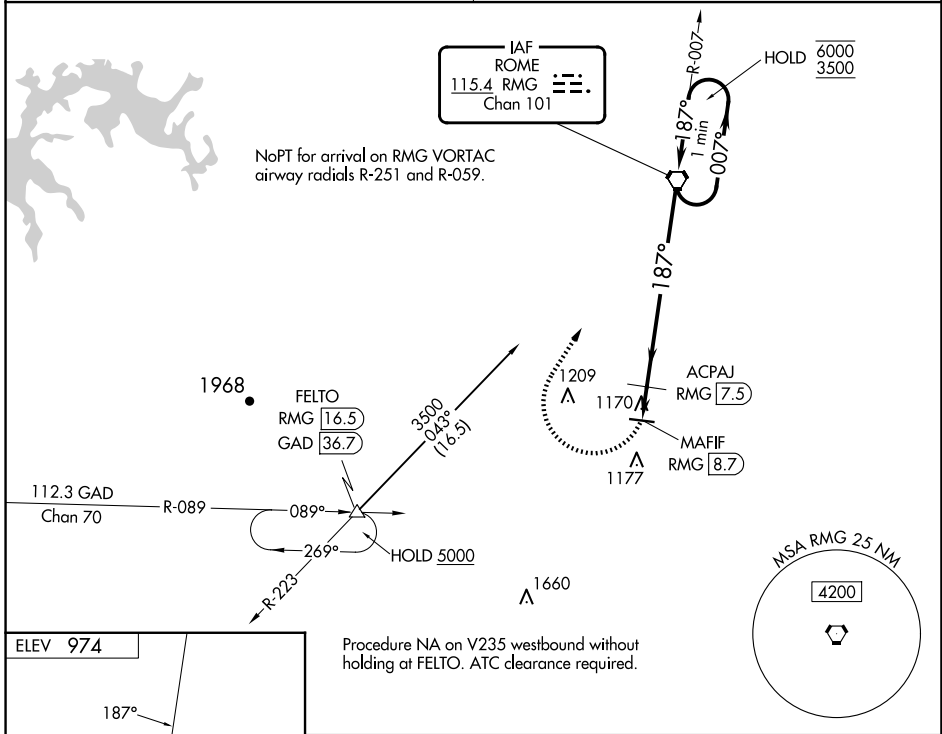
# VOR-A

POLK COUNTY/CORNELIUS MOORE FLD (4A4)

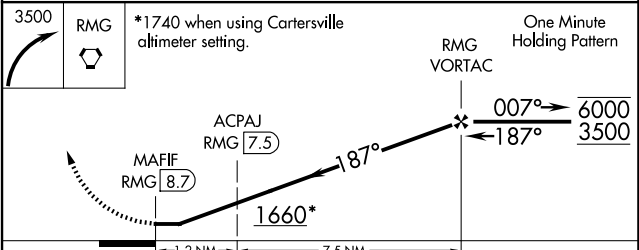
**∇** Obtain local altimeter setting on CTAF; when not received, use Cartersville altimeter setting and increase all MDAs 80 feet, and visibility Cat C/D ¼ SM, ACPAJ fix minimums visibility Cat C/D ¼ SM.

**△ NA** MISSED APPROACH: Climbing right turn to 3500 direct RMG VORTAC and hold, continue climb in hold to 3500.

ATLANTA CENTER <b>124.5 270.325</b>	UNICOM <b>122.8 (CTAF)</b>
--	-------------------------------



Procedure NA on V235 westbound without holding at FELTO. ATC clearance required.



CATEGORY	A	B	C	D
CIRCLING	1660-1	686 (700-1)	1660-2 686 (700-2)	1660-2½ 686 (700-2½)
<b>ACPAJ FIX MINIMUMS (DME REQUIRED)</b>				
CIRCLING	1520-1	546 (600-1)	1520-1½ 546 (600-1½)	1580-2 606 (700-2)

MIRL Rwy 10-28

FAF to MAP 8.7 NM					
Knots	60	90	120	150	180
Min:Sec	8:42	5:48	4:21	3:29	2:54

SE-4, 11 JUN 2026 to 09 JUL 2026

SE-4, 11 JUN 2026 to 09 JUL 2026