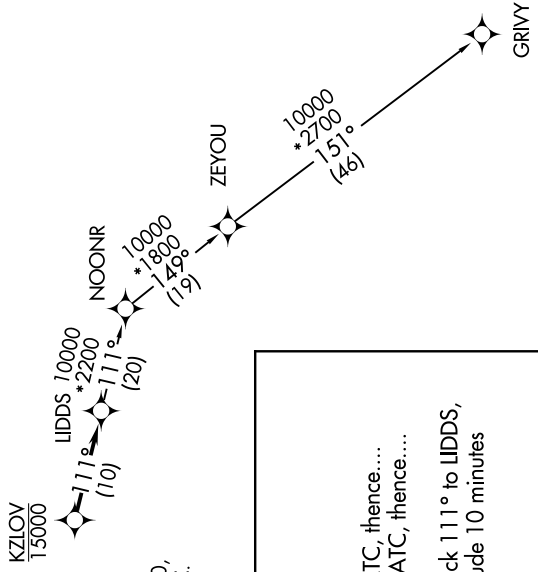


EC-1, 11 JUN 2026 to 09 JUL 2026

DETROIT DEP CON
118.95 284.0
ATIS
134.55
CLNC DEL
121.6
GND CON
121.6
ANN ARBOR TOWER*
120.3 (CTAF)

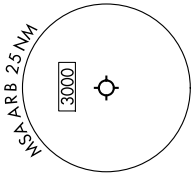
RNAV 1 - DME/DME/IRU or GPS.
RADAR required
RADAR required for non-GPS equipped aircraft.

TAKEOFF MINIMUMS:
Rwys 12, 30: NA - Environmental.
Rwys 6, 24: Standard.



NOTE: Turbopjet departures at/above 10000,
maintain 280K until advised by ATC.

TOP ALTITUDE:
ASSIGNED BY ATC



DEPARTURE ROUTE DESCRIPTION

TAKEOFF RUNWAY 6: Climb on heading 060° or as assigned by ATC, thence....
TAKEOFF RUNWAY 24: Climb on heading 240° or as assigned by ATC, thence....

....for RADAR vectors to cross KZLOW at or below 15000, then on track 111° to LIDDS,
then on (transition). Maintain ATC assigned altitude, expect filed altitude 10 minutes
after departure.

GRIVY TRANSITION (LIDDS4.GRIVY):

NOTE: Chart not to scale.

EC-1, 11 JUN 2026 to 09 JUL 2026