

EC-1, 11 JUN 2026 to 09 JUL 2026

**TOP ALTITUDE:  
ASSIGNED BY ATC**

RNAV-1 DME/DME/IRU or GPS.  
RADAR required.

DETROIT DEP CON 118.95 284.0  
ATIS 134.55  
CINC DEL 121.6  
GND CON 121.6  
ANN ARBOR TOWER ★ 120.3 (CTAF)

**DEPARTURE ROUTE DESCRIPTION**

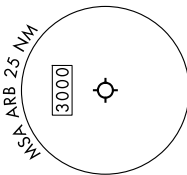
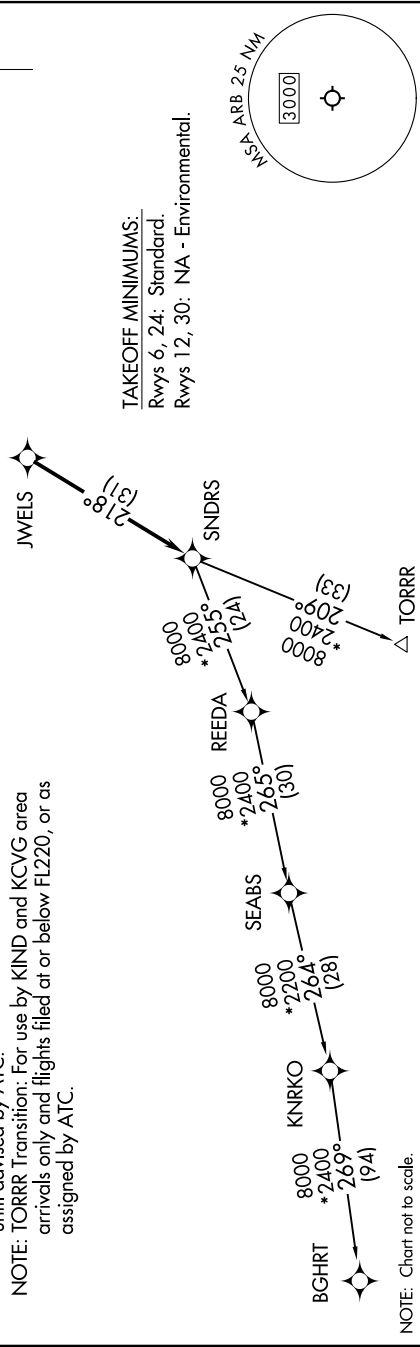
TAKEOFF RUNWAY 6: Climb on heading 060° or as assigned by ATC, thence....  
TAKEOFF RUNWAY 24: Climb on heading 240° or as assigned by ATC, thence....

....for RADAR vectors to JWELS, then on track 218° to SNDRS, then on (transition). Maintain ATC assigned altitude, expect filed altitude 10 minutes after departure.

BGHR T TRANSITION (SNDRS3.BGHRT):  
TORRR TRANSITION (SNDRS3.TORRR):

NOTE: Turbojet departures at/above 10000, maintain 280K until advised by ATC.  
 NOTE: TORRR Transition: For use by KIND and KCVG area arrivals only and flights filed at or below FL220, or as assigned by ATC.

**TAKEOFF MINIMUMS:**  
 Rwys 6, 24: Standard.  
 Rwys 12, 30: NA - Environmental.



EC-1, 11 JUN 2026 to 09 JUL 2026

NOTE: Chart not to scale.