

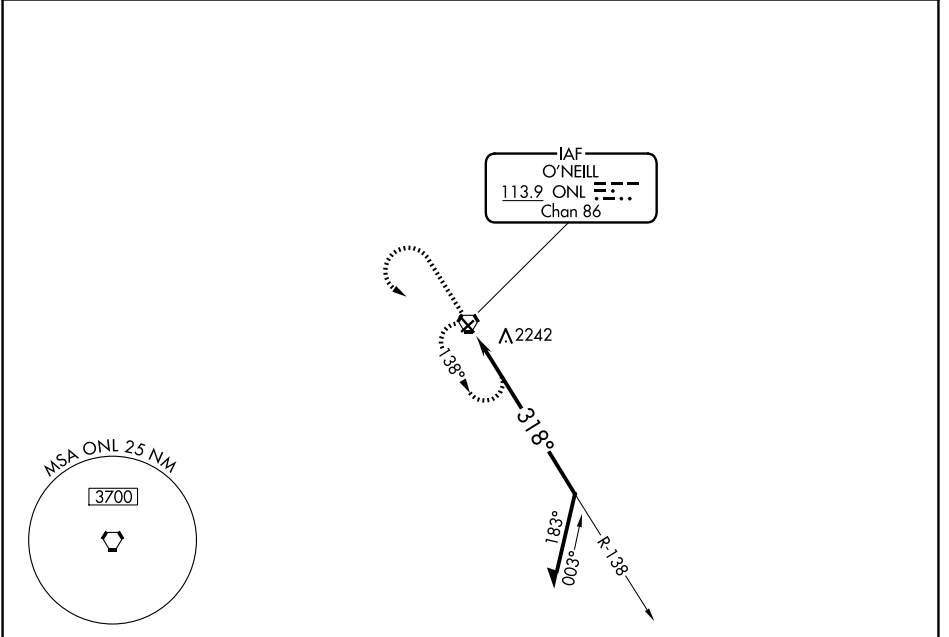
VORTAC ONL 113.9 Chan 86	APP CRS 318°	Rwy Ldg TDZE Apt Elev 4408 2032 2034
--	------------------------	--

VOR RWY 31

THE O'NEILL MUNI-JOHN L BAKER FLD (ONL)

▽ ▲ Night landing: Rwy 4, 22 NA.	MISSED APPROACH: Climb to 3600 then left turn direct ONL VORTAC and hold.
--	---

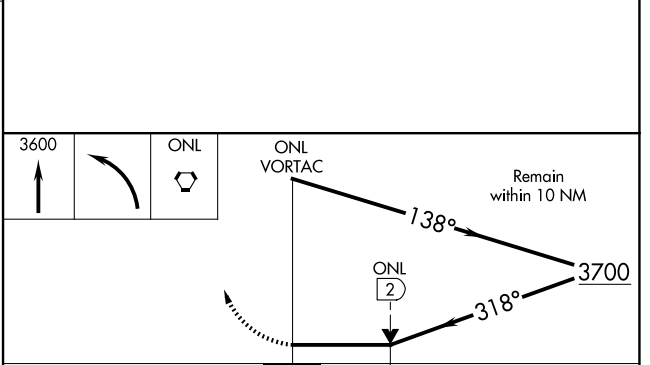
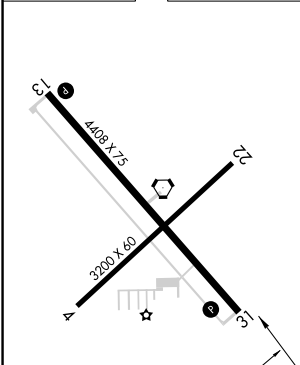
AWOS-3 121.125	MINNEAPOLIS CENTER 128.0 257.95	UNICOM 122.8 (CTAF) 0
--------------------------	---	---------------------------------



NC-2, 11 JUN 2026 to 09 JUL 2026

NC-2, 11 JUN 2026 to 09 JUL 2026

ELEV 2034	TDZE 2032
-----------	-----------



CATEGORY	A	B	C	D
S-31	2600-1	568 (600-1)	2600-1 ⁵ / ₈	568 (600-1 ⁵ / ₈)
CIRCLING	2600-1	566 (600-1)	2680-1 ³ / ₄ 646 (700-1 ³ / ₄)	2840-2 ¹ / ₂ 806 (900-2 ¹ / ₂)

O'NEILL, NEBRASKA
Amdt 1E 19MAY22

THE O'NEILL MUNI-JOHN L BAKER FLD (ONL)
42°28'N-98°41'W
VOR RWY 31