

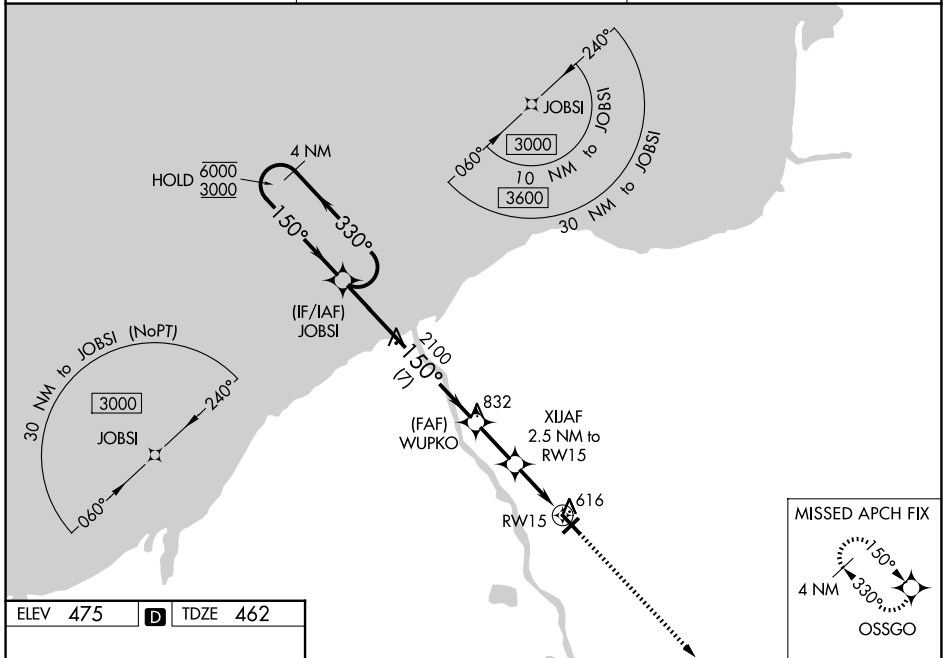
WAAS CH <b>72820</b> <b>W15A</b>	APP CRS <b>150°</b>	Rwy Ldg TDZE Apt Elev	<b>5196</b> <b>462</b> <b>475</b>
--	------------------------	-----------------------------	---

# RNAV (GPS) RWY 15

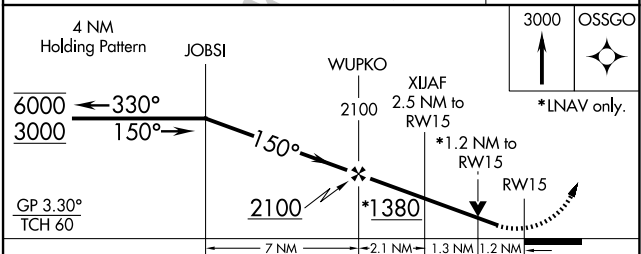
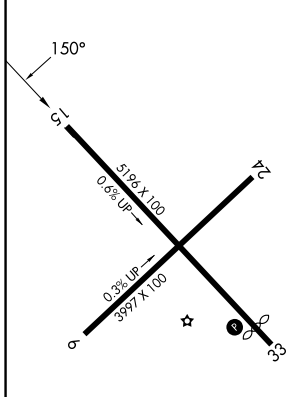
OSWEGO COUNTY (FZY)

RNP APCH.	MISSED APPROACH: Climb to 3000 direct OSSGO and hold.
<p><b>▽</b> Rwy 15 helicopter visibility reduction below 3/4 SM NA. <b>▲</b> For uncompensated Baro-VNAV systems, LNAV/VNAV NA below -24°C or above 54°C.</p>	

ASOS <b>119.275</b>	SYRACUSE APP CON <b>126.125 269.125</b>	UNICOM <b>123.0 (CTAF) 0</b>
------------------------	--	---------------------------------



ELEV <b>475</b>	<b>D</b>	TDZE <b>462</b>
-----------------	----------	-----------------



CATEGORY	A	B	C	D
LPV DA	783-1 321 (400-1)			NA
LNAV/VNAV DA	887-1¼ 425 (500-1¼)			NA
LNAV MDA	920-1	458 (500-1)	920-1¾ 458 (500-1¾)	NA
CIRCLING	920-1 445 (500-1)	940-1 465 (500-1)	960-1½ 485 (500-1½)	NA

- MIRL Rwy 6-24
- HIRL Rwy 15-33
- REIL Rwy 15 and 33
- REIL Rwy 6 and 24

NE-2, 11 JUN 2026 to 09 JUL 2026

NE-2, 11 JUN 2026 to 09 JUL 2026