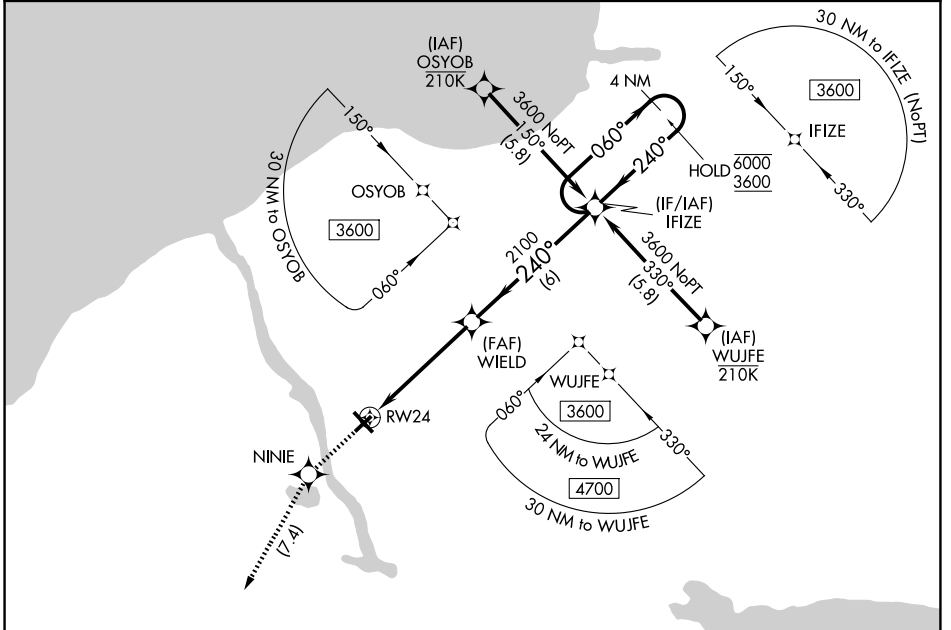


APP CRS 240°	Rwy Ldg TDZE Apt Elev	3997 469 475
------------------------	-----------------------------	---

RNAV (GPS) RWY 24

OSWEGO COUNTY (FZY)

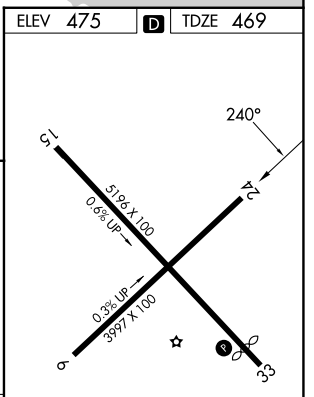
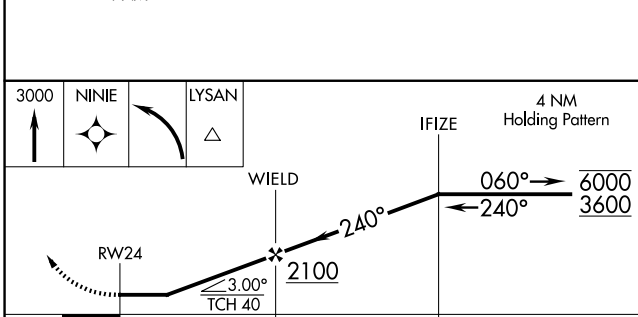
RNP APCH - GPS.		MISSED APPROACH: Climb to 3000 direct NINIE and left turn direct LYSAN and hold, continue climb-in-hold to 3000.
Rwy 24 helicopter visibility reduction below 1 SM NA.		
ASOS 119.275	SYRACUSE APP CON 126.125 269.125	UNICOM 123.0 (CTAF) 0



NE-2, 11 JUN 2026 to 09 JUL 2026

NE-2, 11 JUN 2026 to 09 JUL 2026

ELEV 475	D TDZE 469
----------	-------------------



CATEGORY	A	B	C	D
LNVA MDA	960-1	491 (500-1)	960-1 $\frac{3}{8}$	491 (500-1 $\frac{3}{8}$)
CIRCLING	960-1	485 (500-1)	960-1 $\frac{1}{2}$ 485 (500-1 $\frac{1}{2}$)	1040-2 565 (600-2)

MIRL Rwy 6-24 **0**
 HIRL Rwy 15-33 **0**
 REIL Rwy 15 and 33 **0**
 REIL Rwy 6 and 24