

FAIRHOPE, ALABAMA

AL-5522 (FAA)

23334

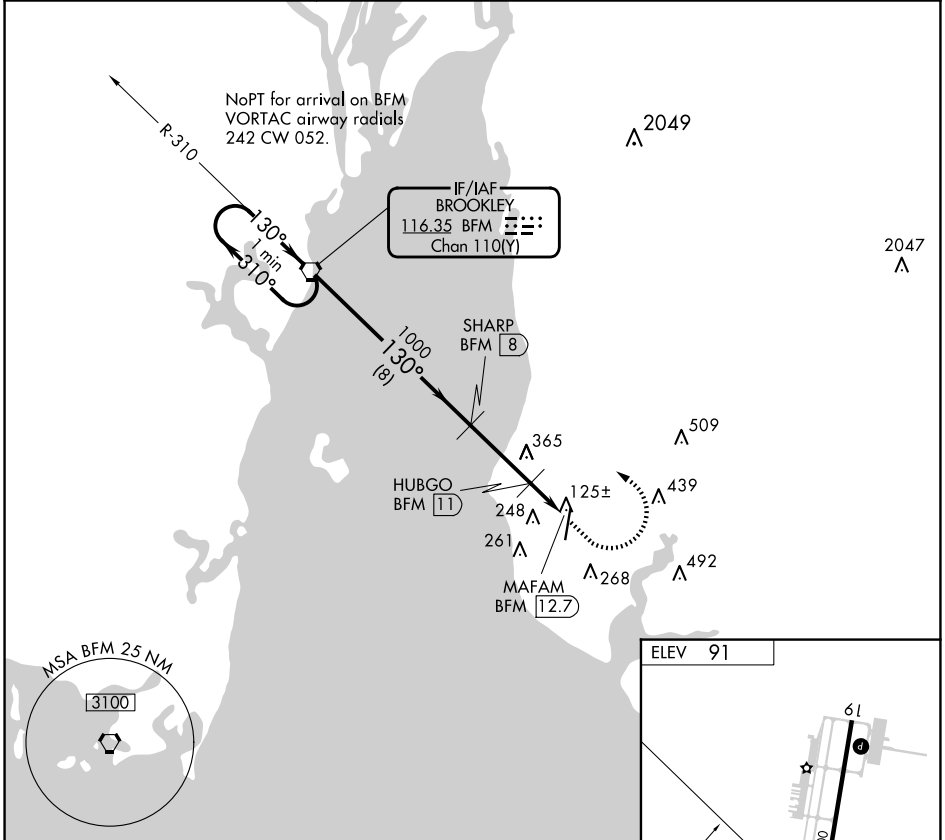
VORTAC BFM 116.35 Chan 110(Y)	APP CRS 130°	Rwy Idg TDZE Apt Elev	N/A N/A 91
---	------------------------	-----------------------------	---------------------------------------

VOR/DME-A
H L SONNY CALLAHAN (CQF)

⚠ When local altimeter setting not received, use Mobile Intl altimeter setting and increase all MDA 60 feet; increase Circling Cats C/D visibility ¼ SM.

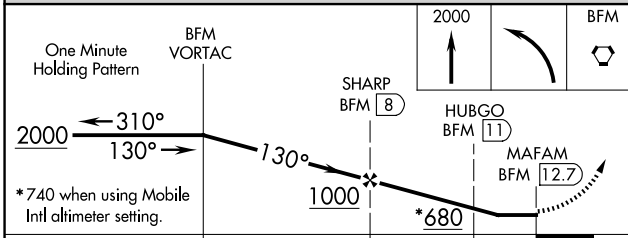
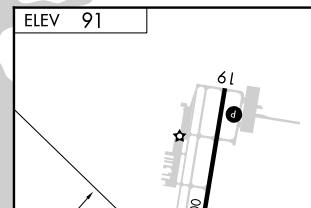
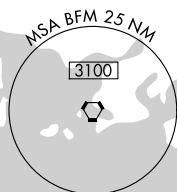
MISSED APPROACH: Climb to 2000 then left turn direct BFM Vortac and hold.

AWOS-3PT 118.425	MOBILE APP CON * 118.5 269.3	UNICOM 123.0 (CTAF) 0
----------------------------	--	---------------------------------

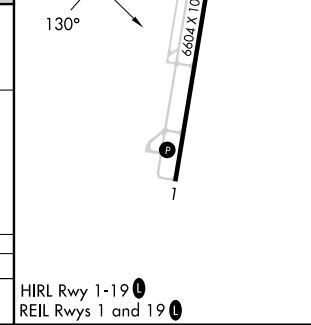


SE-4, 11 JUN 2026 to 09 JUL 2026

SE-4, 11 JUN 2026 to 09 JUL 2026



CATEGORY	A	B	C	D
CIRCLING	560-1 469 (500-1)	580-1 489 (500-1)	720-1¾ 629 (700-1¾)	740-2 649 (700-2)



FAIRHOPE, ALABAMA
Amdt 7A 20MAY21

30°28'N-87°53'W

H L SONNY CALLAHAN (CQF)
VOR/DME-A