

WAAS CH <b>97731</b> <b>W28A</b>	APP CRS <b>283°</b>	Rwy Ldg <b>5006</b> TDZE <b>906</b> Apt Elev <b>906</b>
--	------------------------	---

# RNAV (GPS) RWY 28

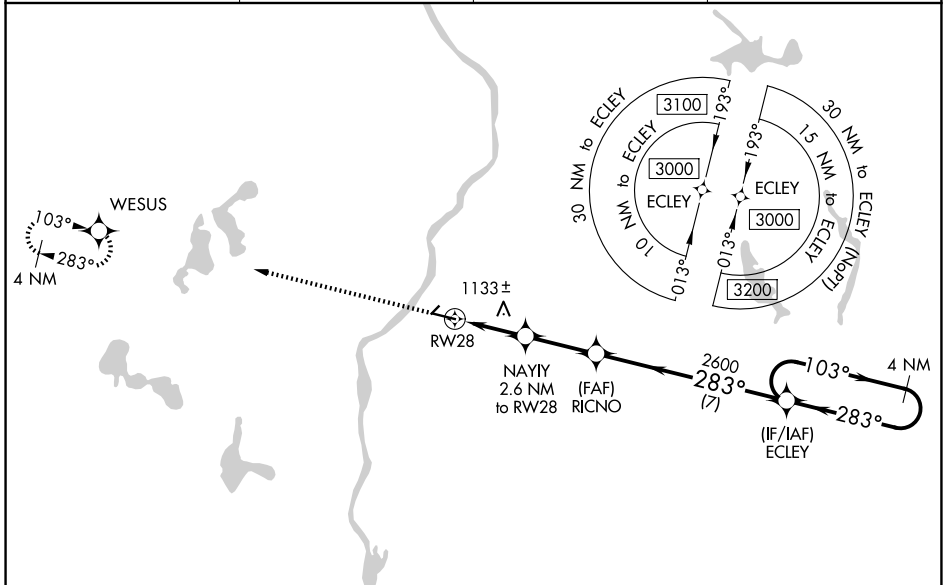
LO SIMENSTAD MUNI (OEO)

RNP APCH - GPS.

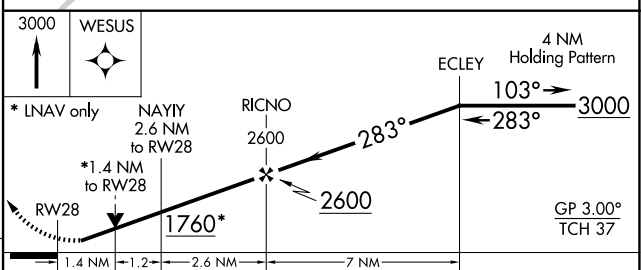
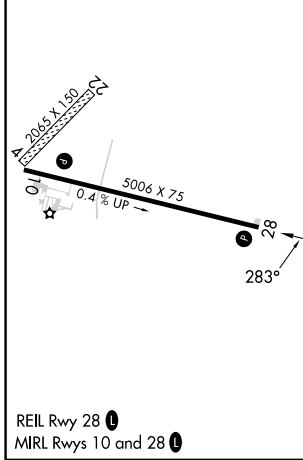
**⚠** For uncompensated Baro-VNAV systems, LNAV/VNAV NA below -16°C or above 54°C. VDP and Baro-VNAV NA when using Anoka County/Blaine (Janes Fld) altimeter setting. Rwy 28 helicopter visibility reduction below 3/4 SM NA. When local altimeter setting not received, use Anoka County/Blaine (Janes Fld) altimeter setting: increase LPV DA to 1163 feet and visibility all Cats 1/8 SM; increase LNAV/VNAV DA to 1236 feet and visibility all Cats 1/4 SM; increase all MDAs 60 feet and visibility LNAV Cat C 1/8 SM and Circling Cat C 1/4 SM. Circling NA to Rwy 4 and 22.

**MISSED APPROACH:** Climb to 3000 direct WESUS and hold.

AWOS-3 <b>119.925</b>	MINNEAPOLIS APP CON <b>121.2 335.65</b>	GCO <b>121.725</b>	CTAF <b>122.90</b>
--------------------------	--	-----------------------	-----------------------



ELEV 906	TDZE 906
----------	----------



CATEGORY	A	B	C	D
LPV DA	1106-3/4	200 (200-3/4)		NA
LNAV/VNAV DA	1179-7/8	273 (300-7/8)		NA
LNAV MDA	1400-1	494 (500-1)	1400-1 3/8 494 (500-1 3/8)	NA
CIRCLING	1400-1 494 (500-1)	1500-1 594 (600-1)	1520-1 3/4 614 (700-1 3/4)	NA

EC-3, 11 JUN 2026 to 09 JUL 2026

EC-3, 11 JUN 2026 to 09 JUL 2026