

APP CRS	Rwy Idg	3496
011°	TDZE	49
	Apt Elev	49

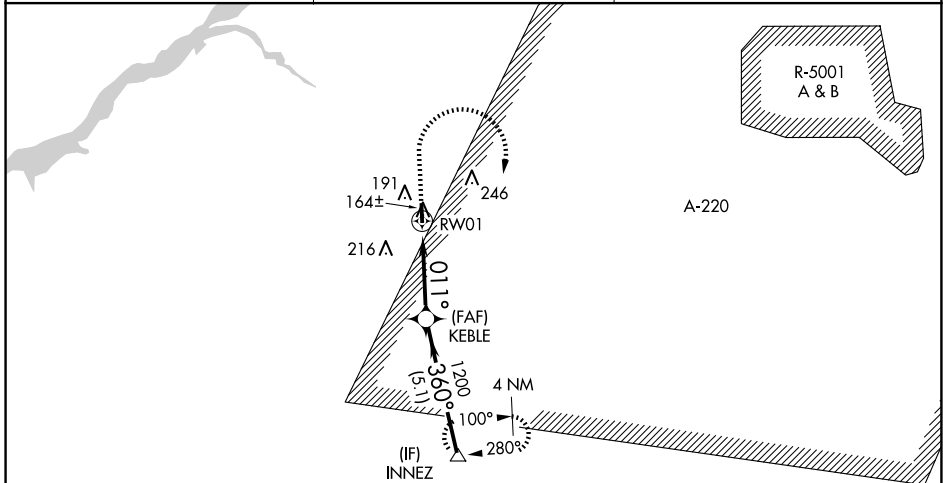
RNAV (GPS) RWY 1

FLYING W (N14)

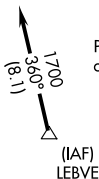
⚠ Use Mount Holly altimeter setting; when not received, use Northeast Philadelphia altimeter setting and increase all MDA 40 feet. DME/DME RNP-0.3 NA. Straight-in Rwy 1 NA at night, Circling Rwy 1 NA at night. Rwy 1 helicopter visibility reduction below 1 SM NA.

MISSED APPROACH: Climb to 500 then climbing right turn to 2000 direct INNEZ and hold.

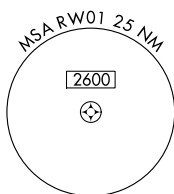
VAY ASOS 119.325	MC GUIRE APP CON 126.475 363.8	UNICOM 122.8 (CTAF) 0
----------------------------	--	---------------------------------



1049 A

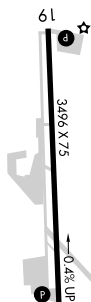


Procedure NA for arrivals on V16 southwest bound.

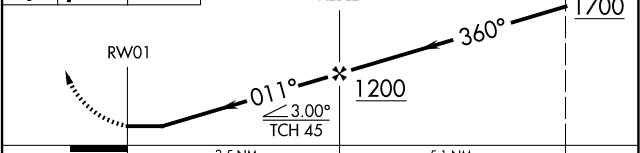


ELEV 49	TDZE 49
---------	---------

MIRL Rwy 1-19 **6**
REIL Rws 1 and 19 **6**



500	2000	INNEZ	VGSI and descent angles not coincident (VGSI Angle 3.50/TCH 26).	INNEZ
↑	↷	△		



CATEGORY	A	B	C	D
LNAV MDA	420-1	371 (400-1)	NA	
CIRCLING	520-1	471 (500-1)	NA	

NE-2, 11 JUN 2026 to 09 JUL 2026

NE-2, 11 JUN 2026 to 09 JUL 2026