


# CRIED ONE DEPARTURE

AL-5537 (FAA)


SUGAR LAND RGNL (SGR)  
HOUSTON, TEXAS


ATIS  
118.125  
CLNC DEL  
121.4  
CLNC DEL  
119.25 (when twr closed)  
GND CON  
121.4  
SUGAR LAND TOWER\*  
118.65 (CTAF)  
HOUSTON DEP CON  
123.8 257.7

**TOP ALTITUDE:  
ASSIGNED BY ATC**

CEDAR CREEK  
114.8 CGY   
Chan 95

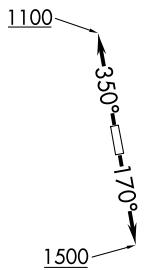
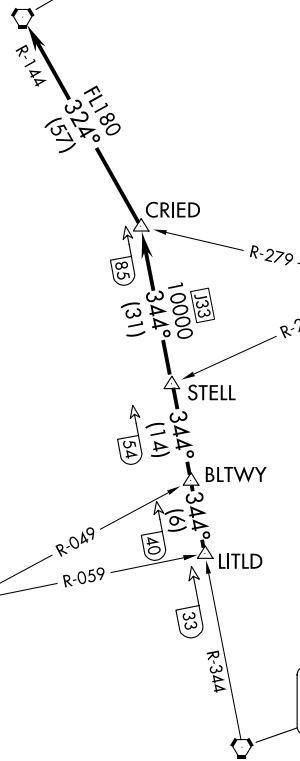
LUFKIN  
112.1 LFK   
Chan 58

NAVASOTA  
115.9 TNV   
Chan 106

HUMBLE  
116.6 IAH   
Chan 113

TAKEOFF MINIMUMS  
Rwys 17, 35: Standard.

NOTE: RADAR required.



(CONTINUED ON FOLLOWING PAGE)

NOTE: Chart not to scale.

SC-5, 11 JUN 2026 to 09 JUL 2026

SC-5, 11 JUN 2026 to 09 JUL 2026

# CRIED ONE DEPARTURE