

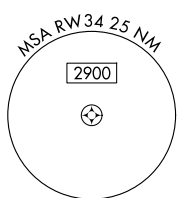
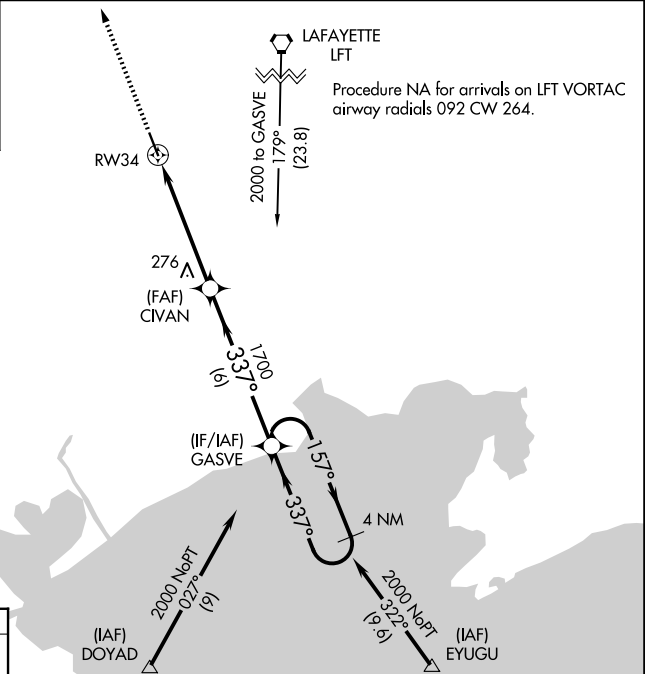
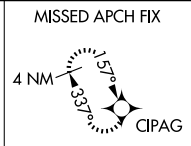
WAAS CH <b>45823</b> <b>W34A</b>	APP CRS <b>337°</b>	Rwy Ldg TDZE <b>15</b> Apt Elev <b>16</b>	<b>5000</b>
--	------------------------	---	-------------

# RNAV (GPS) RWY 34

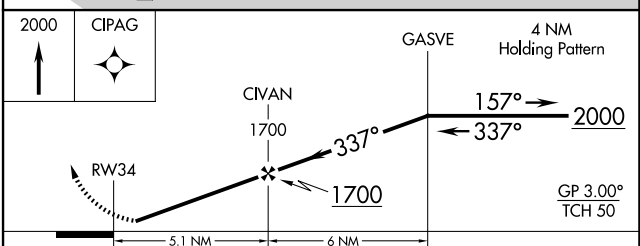
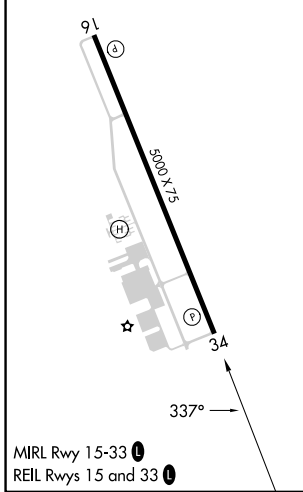
ABBEVILLE CHRIS CRUSTA MEML (IYA)

RNP APCH.	<p>Baro-VNAV NA when using New Iberia altimeter setting. For uncompensated Baro-VNAV systems, LNAV/VNAV NA below -15°C (5°F) or above 54°C (130°F). Helicopter visibility reduction below 3/4 SM NA. When local altimeter setting not received, use New Iberia altimeter setting and increase all DA 27 feet and all MDA 40 feet; increase LNAV/VNAV all Cats visibility 1/8 SM.</p>	MISSED APPROACH: Climb to 2000 direct CIPAG and hold.
-----------	--	--

AWOS-3PT <b>118.875</b>	LAFAYETTE APP CON ★ <b>121.1 268.7</b>	GCO <b>135.075</b>	UNICOM <b>122.8 (CTAF)</b>
----------------------------	---	-----------------------	-------------------------------



ELEV <b>16</b>	TDZE <b>15</b>
----------------	----------------



CATEGORY	A	B	C	D
LPV DA		298-1 283 (300-1)		NA
LNAV/VNAV DA		320-1 305 (400-1)		NA
LNAV MDA	580-1	565 (600-1)	580-1 5/8 565 (600-1 5/8)	NA
CIRCLING	580-1 564 (600-1)	600-1 584 (600-1)	700-2 684 (700-2)	NA

SC-4, 11 JUN 2026 to 09 JUL 2026

SC-4, 11 JUN 2026 to 09 JUL 2026