

WAAS CH 99701 W24A	APP CRS 240°	Rwy Ldg TDZE Apt Elev	5500 545 547
--	------------------------	-----------------------------	---


RNAV (GPS) RWY 24

MUSCATINE MUNI (MUT)

RNP APCH - GPS.

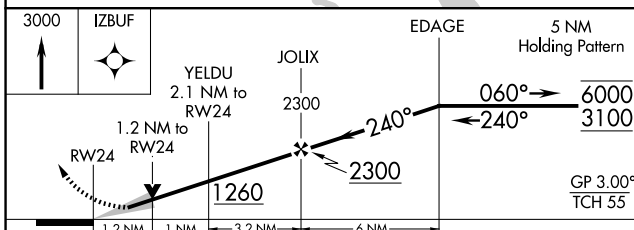
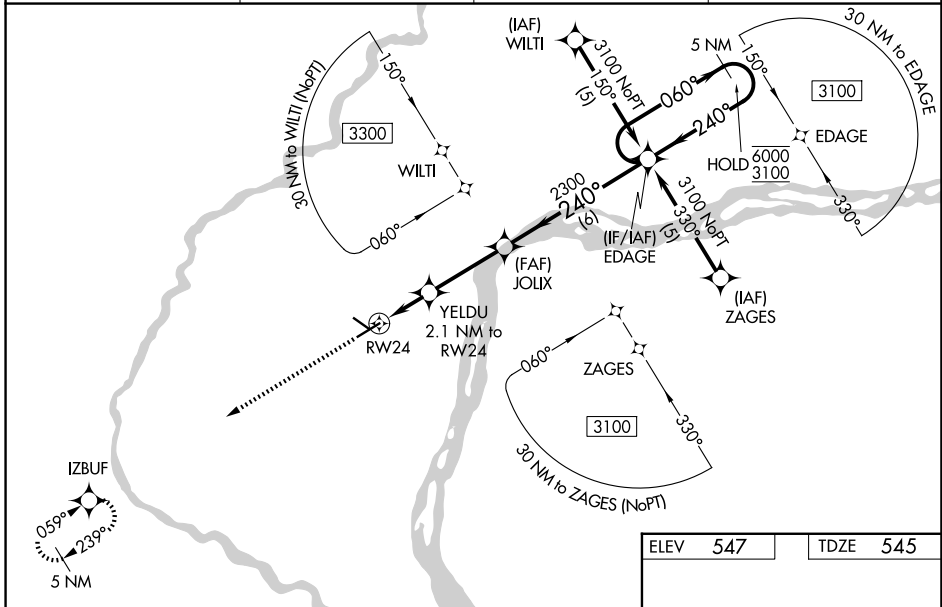
⚠ For uncompensated Baro-VNAV systems, LNAV/VNAV NA below -16°C or above 54°C. For inop ALS, increase LPV all Cats visibility to 1 SM, LNAV/VNAV all Cats visibility to 1½ SM, and LNAV Cats C/D visibility to 1½ SM. When local altimeter setting not received, use IOW altimeter setting and increase LPV DA to 883 feet; increase LNAV/VNAV DA to 1024 feet and all visibilities ¼ SM. Increase all MDAs 80 feet and LNAV visibility Cat C/D ¼ SM, and Circling visibility Cat C ¼ SM. Baro-VNAV and VDP NA when using IOW altimeter setting.

MALSR

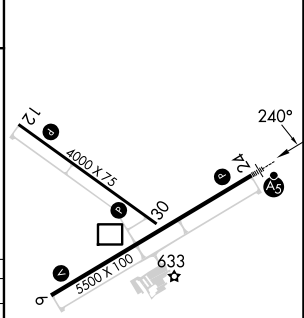


MISSED APPROACH:
Climb to 3000 direct IZBUF and hold.

AWOS-3P 120.625	QUAD CITY APP CON * 133.275 257.8	CLNC DEL 119.125	UNICOM 122.7 (CTAF)
---------------------------	---	----------------------------	-------------------------------



ELEV 547	TDZE 545
----------	----------



CATEGORY	A	B	C	D
LPV DA		812-½	267 (300-½)	
LNAV/VNAV DA		953-¾	408 (500-¾)	
LNAV MDA	960-½	415 (500-½)	960-¾	415 (500-¾)
CIRCLING	1080-1 533 (600-1)	1200-1 653 (700-1)	1200-1¾ 653 (700-1¾)	1500-3 953 (1000-3)

REIL Rwy 6, 12, and 30
 MIRL Rwy 6-24 and 12-30

NC-3, 11 JUN 2026 to 09 JUL 2026

NC-3, 11 JUN 2026 to 09 JUL 2026