

| | | |
|--|------------------------|---|
| WAAS CH 63105 W36A | APP CRS 001° | Rwy Ldg 4997 TDZE 1181 Apt Elev 1191 |
|--|------------------------|---|

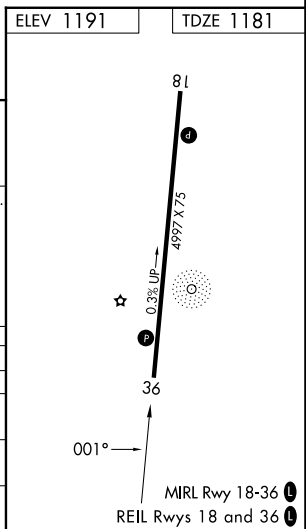
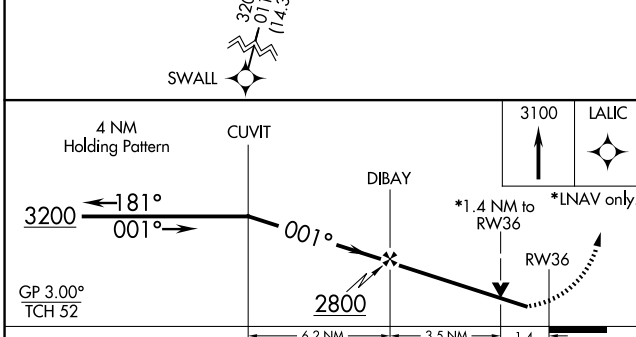
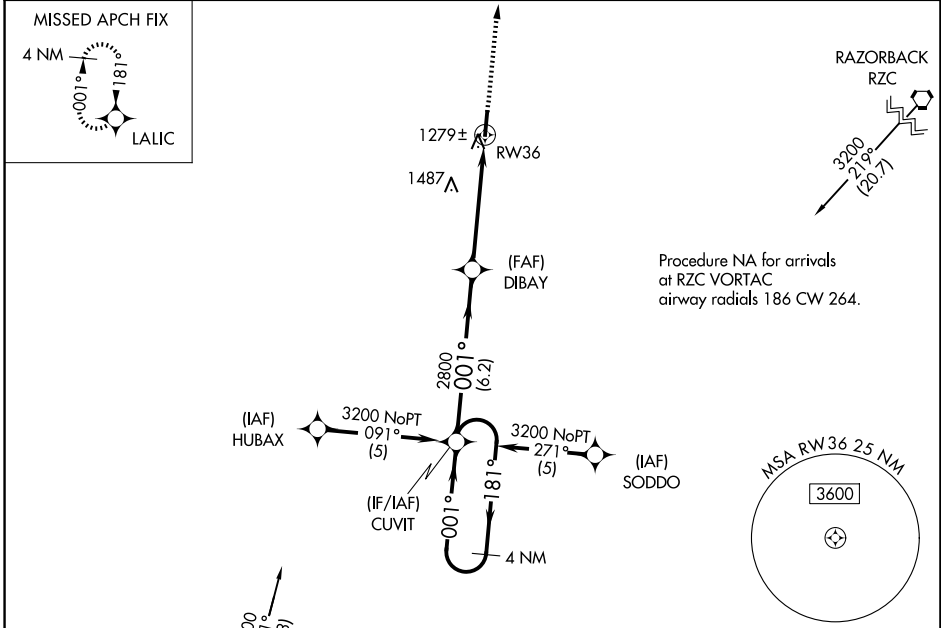
RNAV (GPS) RWY 36

SMITH FLD (SLG)

⚠ When local altimeter setting not received, use Northwest Arkansas MSL altimeter setting and increase LPV DA to 1469 feet, increase LNAV/VNAV DA to 1587 feet; increase all MDAs 40 feet. For uncompensated Baro-VNAV systems, LNAV/VNAV NA below -17°C (2°F) or above 46°C (114°F). DME/DME RNP-0.3 NA. Visibility reduction by helicopters NA. Baro-VNAV and VDP NA when using Northwest Arkansas MSL altimeter setting.

MISSED APPROACH: Climb to 3100 direct LALIC and hold.

| | | |
|----------------------------|--|---------------------------------|
| AWOS-3PT 118.375 | RAZORBACK APP CON* 121.0 244.575 | UNICOM 122.8 (CTAF) 0 |
|----------------------------|--|---------------------------------|



| CATEGORY | A | B | C | D |
|--------------|-----------------------|-----------------------|-------------------------|-------------------------|
| LPV DA | | 1431-1 | 250 (300-1) | |
| LNAV/VNAV DA | | 1549-1½ | 368 (400-1½) | |
| LNAV MDA | 1660-1 | 479 (500-1) | 1660-1½ 479 (500-1½) | 1660-1½ 479 (500-1½) |
| CIRCLING | 1660-1 469 (500-1) | 1720-1 529 (600-1) | 1800-1¾ 609 (700-1¾) | 1880-2¼ 689 (700-2¼) |

SC-1, 11 JUN 2026 to 09 JUL 2026

SC-1, 11 JUN 2026 to 09 JUL 2026