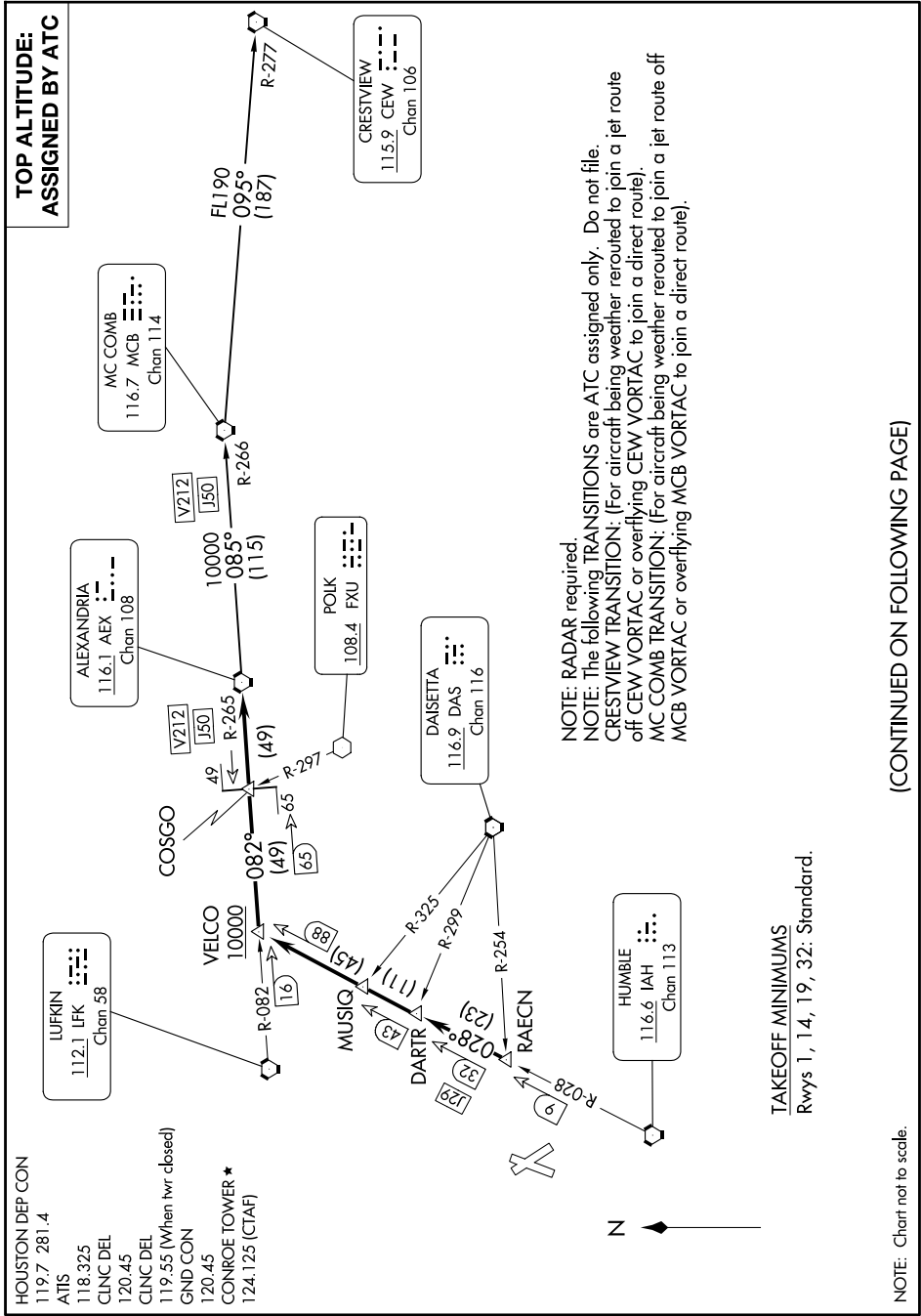


# ALEXANDRIA THREE DEPARTURE

SC-5, 11 JUN 2026 to 09 JUL 2026



HOUSTON DEP CON  
119.7 281.4  
ATIS  
118.325  
CLNC DEL  
120.45  
CLNC DEL  
119.55 (When hwr closed)  
GND CON  
120.45  
CONROE TOWER ★  
124.125 (CTAF)

**TOP ALTITUDE:  
ASSIGNED BY ATC**

**NOTE: RADAR required**  
NOTE: The following TRANSITIONS are ATC assigned only. Do not file.  
CRESTVIEW TRANSITION: (For aircraft being weather rerouted to join a jet route off CEW VORTAC or overflying CEW VORTAC to join a direct route).  
MC COMB TRANSITION: (For aircraft being weather rerouted to join a jet route off MCB VORTAC or overflying MCB VORTAC to join a direct route).

**TAKEOFF MINIMUMS**  
Rwys 1, 14, 19, 32: Standard.

NOTE: Chart not to scale.

(CONTINUED ON FOLLOWING PAGE)

# ALEXANDRIA THREE DEPARTURE

SC-5, 11 JUN 2026 to 09 JUL 2026