

# KARR SEVEN DEPARTURE (RNAV)

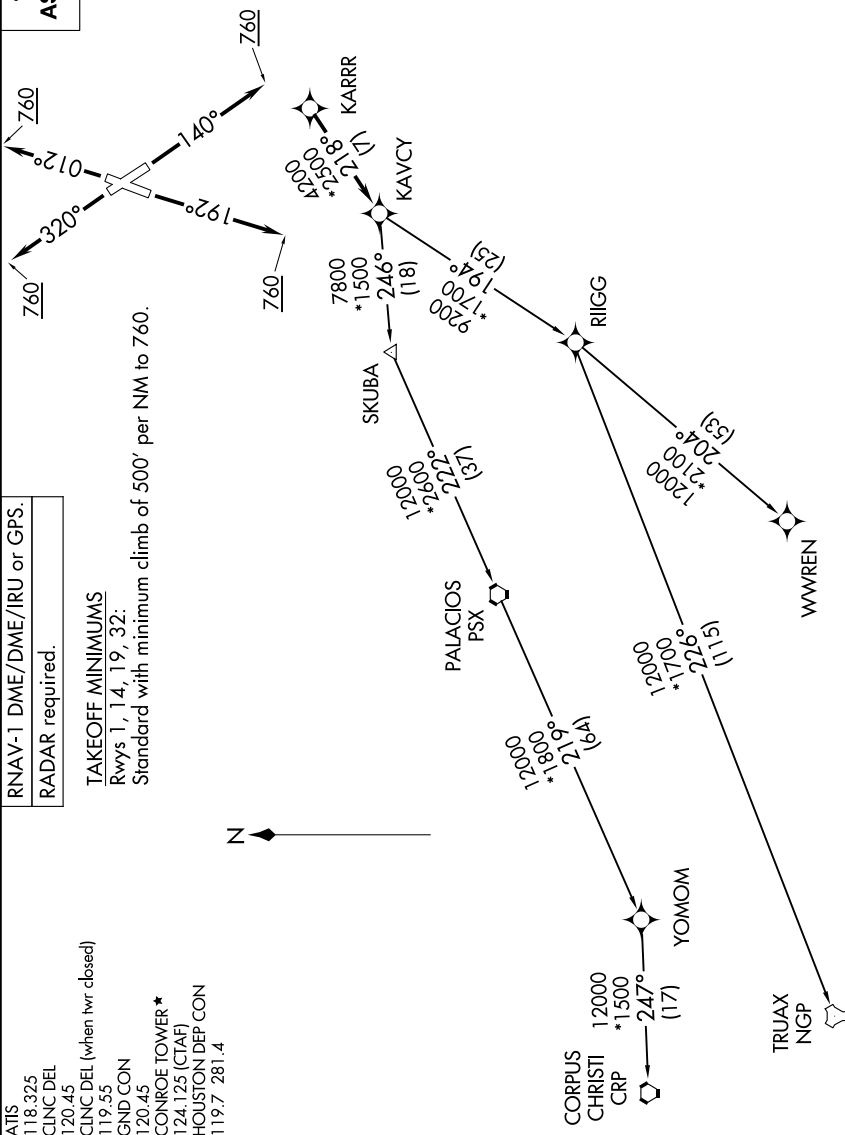
TOP ALTITUDE:  
ASSIGNED BY ATC

RNAV-1 DME/DME/IRU or GPS.  
RADAR required.

**TAKEOFF MINIMUMS**

Rwys 1, 14, 19, 32:  
Standard with minimum climb of 500' per NM to 760.

ATIS 118.325  
CLNC DEL 120.45  
CLNC DEL (when hr closed) 119.55  
GND CON 120.45  
CONROE TOWER\* 124.125 (CTAF)  
HOUSTON DEP CON 119.7 281.4



(NARRATIVE ON FOLLOWING PAGE)

NOTE: Chart not to scale.