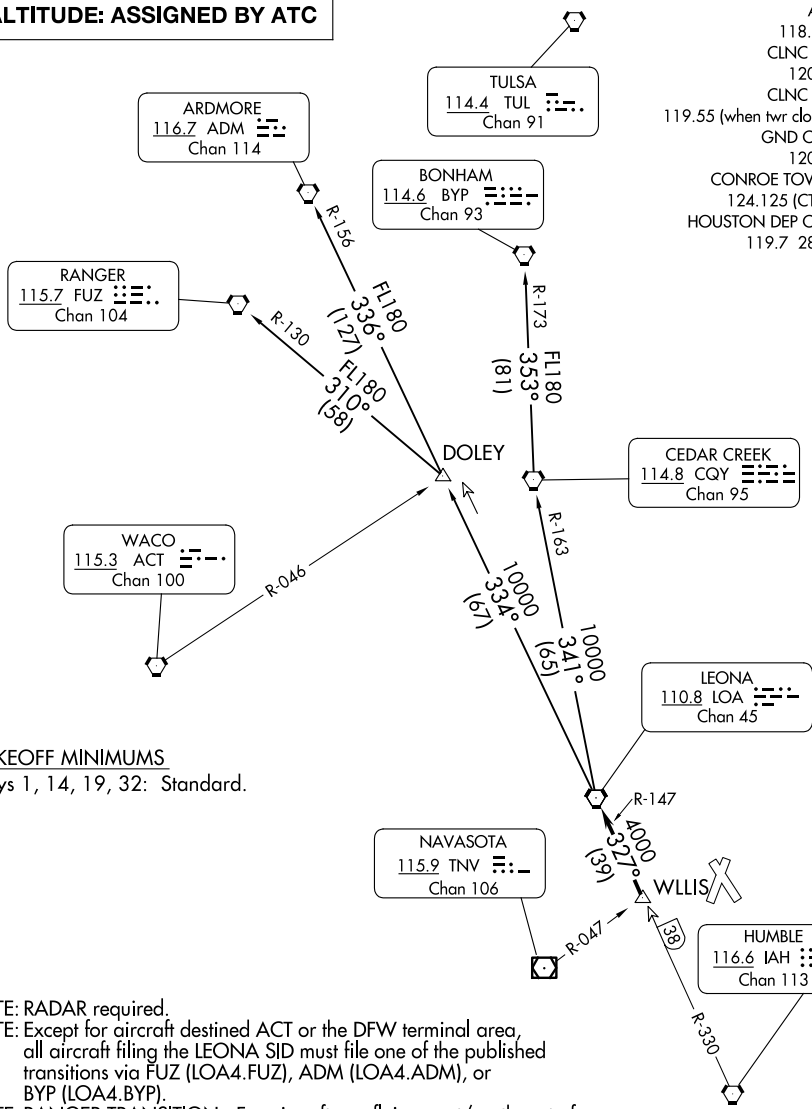


LEONA FOUR DEPARTURE

TOP ALTITUDE: ASSIGNED BY ATC



- ATIS 118.325
- CLNC DEL 120.45
- CLNC DEL 119.55 (when twr closed)
- GND CON 120.45
- CONROE TOWER* 124.125 (CTAF)
- HOUSTON DEP CON 119.7 281.4

TAKEOFF MINIMUMS

Rwys 1, 14, 19, 32: Standard.

NOTE: RADAR required.

NOTE: Except for aircraft destined ACT or the DFW terminal area, all aircraft filing the LEONA SID must file one of the published transitions via FUZ (LOA4.FUZ), ADM (LOA4.ADM), or BYP (LOA4.BYP).

NOTE: RANGER TRANSITION: For aircraft overflying west/northwest of the DFW terminal area FL240 and above.

NOTE: ARDMORE TRANSITION: For aircraft overflying north/northwest of the DFW terminal area FL240 and above.

NOTE: BONHAM TRANSITION: For aircraft overflying/landing TUL VORTAC FL240 and above.

NOTE: Chart not to scale.

(CONTINUED ON FOLLOWING PAGE)

SC-5, 11 JUN 2026 to 09 JUL 2026

SC-5, 11 JUN 2026 to 09 JUL 2026