

APP CRS <b>312°</b>	Rwy Ldg <b>2690</b>
	TDZE <b>133</b>
	Apt Elev <b>135</b>

# RNAV (GPS) Y RWY 31R

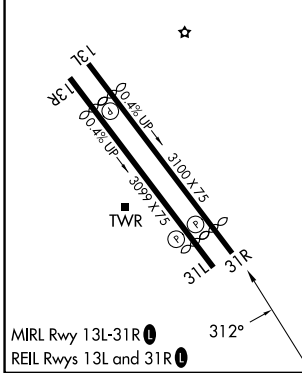
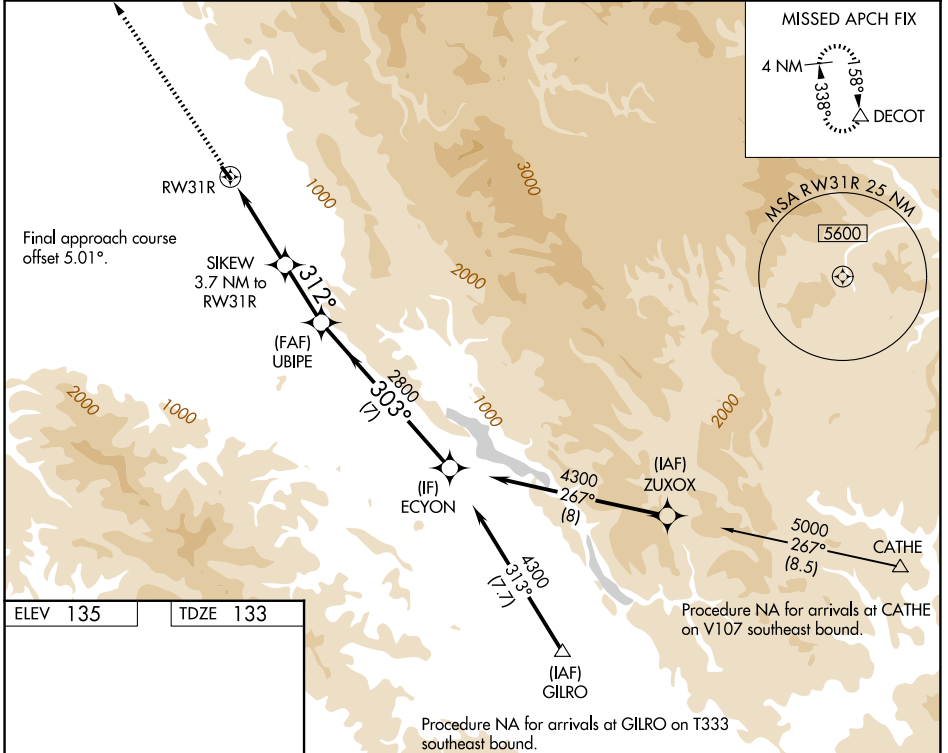
REID-HILLVIEW OF SANTA CLARA COUNTY (R.H.V)

RNP APCH.

▼ NA Circling Rwy 31L NA at night. Rwy 31R helicopter visibility reduction below ¾ SM NA. VDP NA when using Norman Y Mineta San Jose Intl altimeter setting. Circling east of Rwy 13L-31R NA at night. When control tower closed, use Norman Y Mineta San Jose Intl altimeter setting and increase all MDA's 40 feet.

MISSED APPROACH: Climb to 4000 direct DECOT and hold.

ATIS <b>125.2</b>	NORCAL APP CON <b>120.1 290.25</b>	REID-HILLVIEW TOWER * (Rwy 13L-31R) (Rwy 13R-31L) <b>119.8 (CTAF) 0 126.1</b>	GND CON <b>121.65</b>	UNICOM <b>122.95</b>
----------------------	---------------------------------------	---	--------------------------	-------------------------



ELEV 135	TDZE 133			
4000	DECOT			
CATEGORY	A	B	C	D
LNAV MDA	1300-1¼ 1167 (1200-1¼)	1300-1½ 1167 (1200-1½)	NA	
CIRCLING	1300-1¼ 1165 (1200-1¼)	1300-1½ 1165 (1200-1½)	NA	

SW-2, 11 JUN 2026 to 09 JUL 2026

SW-2, 11 JUN 2026 to 09 JUL 2026