

TERPZ EIGHT DEPARTURE (RNAV)

EASTON, MARYLAND

POTOMAC DEP CON
 133.75 254.35
 ATIS
 124.475
 CLNC DEL
 119.075
 GND CON
 119.075
 EASTON TOWER *
 118.525 (CTAF)

RNAV 1 - DME/DME/IRU or GPS.

RADAR required.

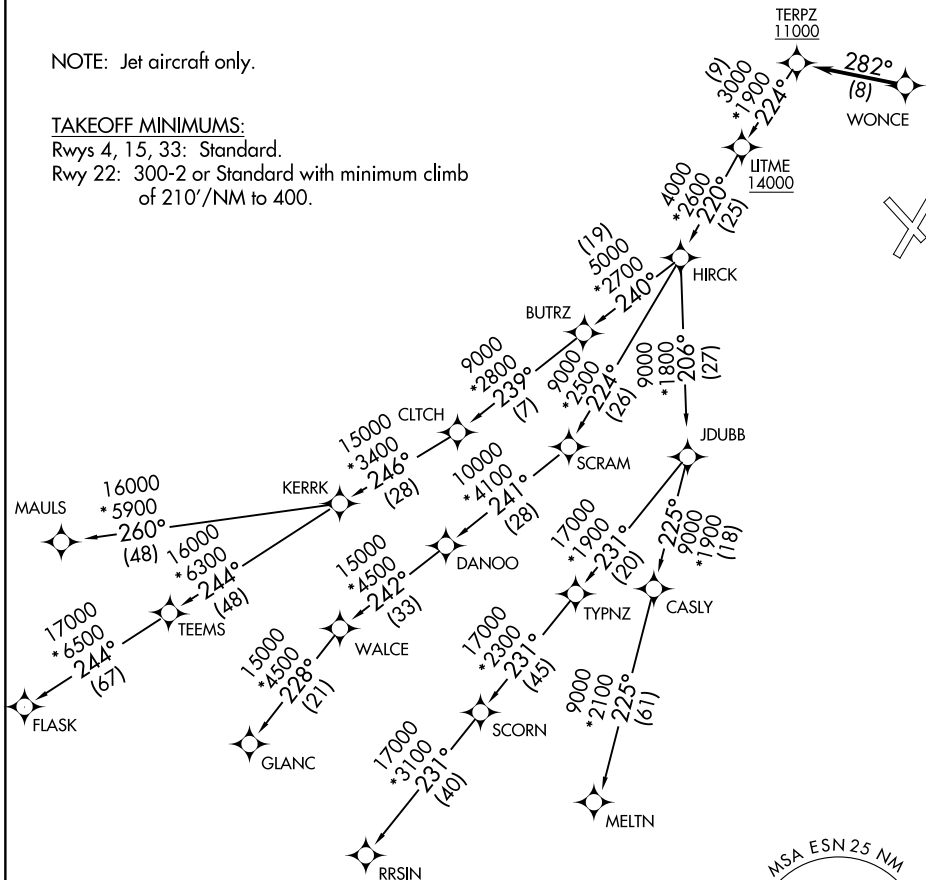
TOP ALTITUDE:
17000

NOTE: Jet aircraft only.

TAKEOFF MINIMUMS:

Rwys 4, 15, 33: Standard.

Rwy 22: 300-2 or Standard with minimum climb of 210'/NM to 400.



NE-3, 11 JUN 2026 to 09 JUL 2026

NE-3, 11 JUN 2026 to 09 JUL 2026

NOTE: Chart not to scale.

TERPZ EIGHT DEPARTURE (RNAV)

(TERPZ8.TERPZ) 11JUL24

EASTON, MARYLAND

EASTON/NEWNAM FLD (ESN)