

WAAS CH <b>70704</b> <b>W32A</b>	APP CRS <b>318°</b>	Rwy Ldg TDZE Apt Elev	<b>5425</b> <b>20</b> <b>20</b>
----------------------------------------	------------------------	-----------------------------	---------------------------------------

# RNAV (GPS) RWY 32

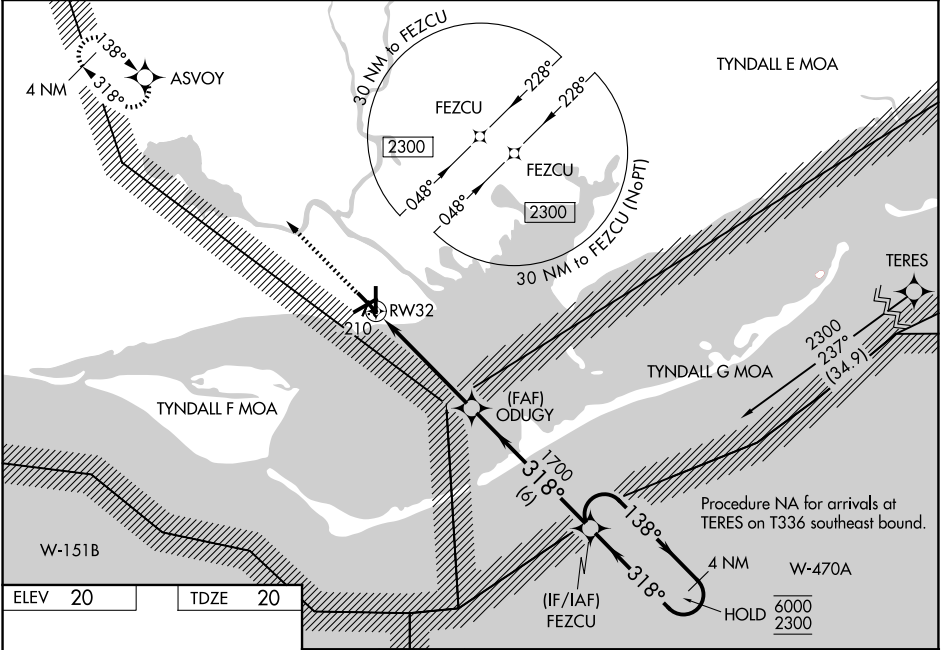
APALACHICOLA RGNL-CLEVE RANDOLPH FLD (AAF)

RNP APCH - GPS.

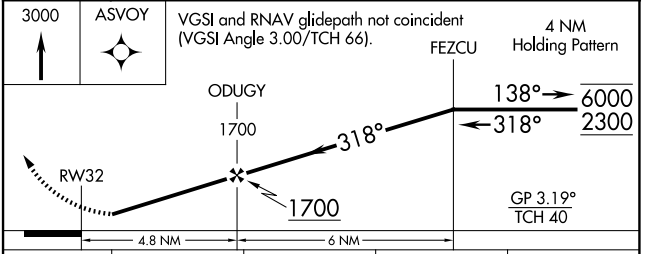
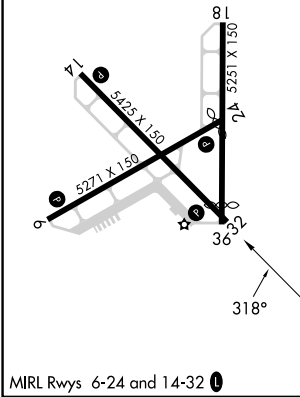
▼ Rwy 32 helicopter visibility reduction below 1 SM NA. Baro-VNAV NA when using ECP altimeter setting.  
 ▲ For uncompensated Baro-VNAV systems, LNAV/VNAV NA below -15°C or above 54°C. Straight-in Rwy 32 NA at night, Circling Rwy 6, 18, 24, 32, 36 NA at night. When local altimeter setting not received, use ECP altimeter setting and increase LPV DA to 480 feet and all visibilities 3/8 SM. Increase LNAV/VNAV DA to 527 feet and all visibilities 3/8 SM. Increase all MDAs 140 feet and LNAV visibility Cat C/D 3/8 SM, and Circling visibility Cat C/D 1/2 SM.

MISSED APPROACH: Climb to 3000 direct ASVOY and hold, continue climb-in-hold to 3000.

ASOS <b>119.925</b>	TYNDALL APP CON ★ <b>124.15</b>	UNICOM <b>122.8 (CTAF)</b>
------------------------	------------------------------------	-------------------------------



ELEV 20	TDZE 20
---------	---------



CATEGORY	A	B	C	D
LPV DA	349-1 1/8 329 (400-1 1/8)			
LNAV/VNAV DA	396-1 376 (400-1)			
LNAV MDA	460-1	440 (500-1)	460-1 1/4	440 (500-1 1/4)
CIRCLING	520-1	500 (500-1)	680-1 3/4 660 (700-1 3/4)	680-2 660 (700-2)

# RNAV (GPS) RWY 32

SE-3, 11 JUN 2026 to 09 JUL 2026

SE-3, 11 JUN 2026 to 09 JUL 2026