

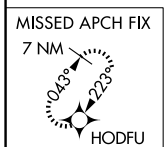
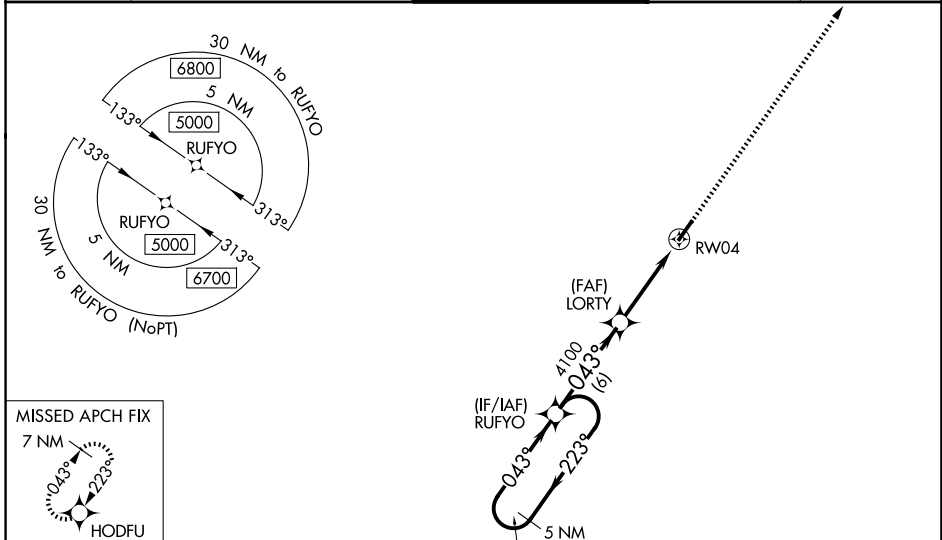
WAAS CH 42613 W04A	APP CRS 043°	Rwy Ldg TDZE Apt Elev	7003 2288 2302
--	------------------------	-----------------------------	---

RNAV (GPS) RWY 4

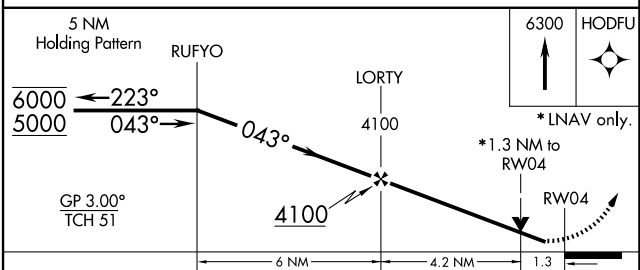
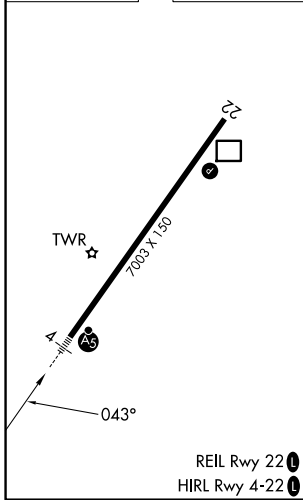
GREENBRIER VALLEY (LWB)

RNP APCH.	MALSR	MISSED APPROACH: Climb to 6300 direct HODFU and hold, continue climb-in-hold to 6300.
Rwy 4 helicopter visibility reduction below $\frac{3}{4}$ NA. For uncompensated Baro-VNAV systems, LNAV/VNAV NA below -19°C or above 54°C. For inop ALS, increase LNAV Cats A/B visibilities to 1 SM, Cats C/D to $\frac{1}{2}$ SM, and increase LPV all Cats visibilities to $\frac{7}{8}$ SM.		

ATIS 121.4	WASHINGTON CENTER 125.725 134.4 353.9	LEWISBURG TOWER ★ 118.9 (CTAF) 0	GND CON 121.9	UNICOM 122.95
----------------------	---	--	-------------------------	-------------------------



ELEV 2302	D	TDZE 2288
-----------	----------	-----------



CATEGORY	A	B	C	D
LPV DA		2559- $\frac{3}{4}$	271 (300- $\frac{3}{4}$)	
LNAV/VNAV DA		2738- $\frac{7}{8}$	450 (500- $\frac{7}{8}$)	
LNAV MDA	2760- $\frac{3}{4}$	472 (500- $\frac{3}{4}$)	2760-1	472 (500-1)
CIRCLING	2840-1 538 (600-1)	3040-1 738 (800-1)	3280-3 978 (1000-3)	3680-3 1378 (1400-3)

NE-4, 11 JUN 2026 to 09 JUL 2026

NE-4, 11 JUN 2026 to 09 JUL 2026