

APP CRS <b>240°</b>	Rwy Ldg TDZE Apt Elev	<b>2987</b> <b>42</b> <b>42</b>
------------------------	-----------------------------	---------------------------------------

# RNAV (GPS) RWY 24

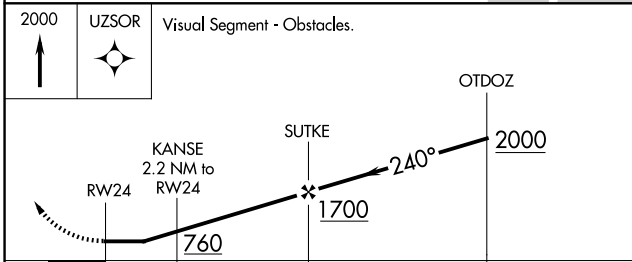
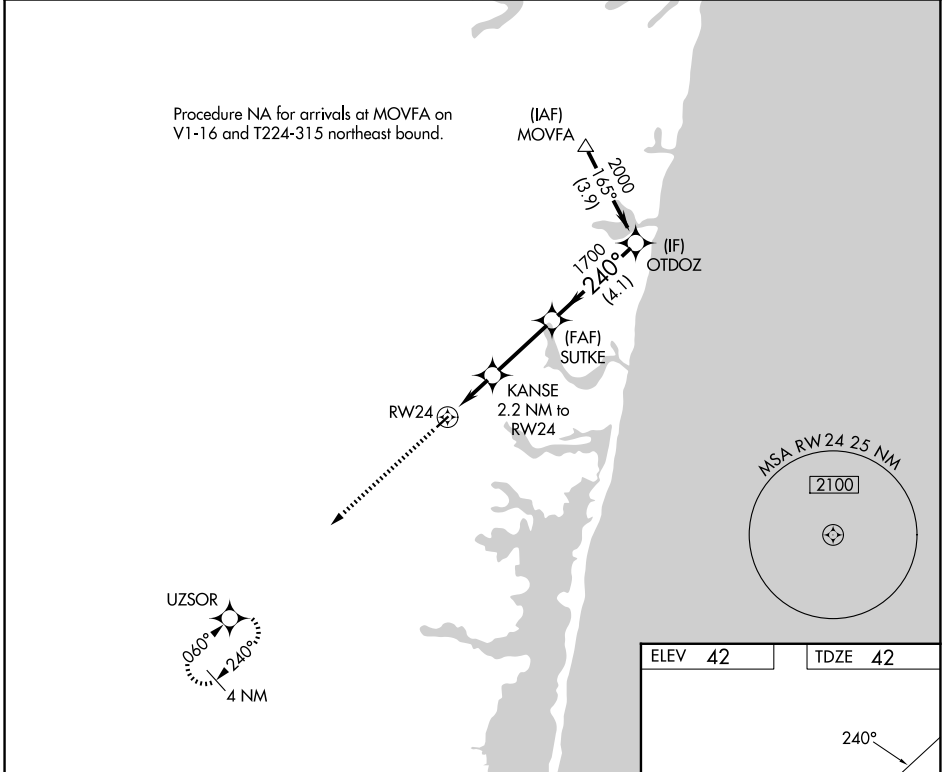
LAKEWOOD (N12)

RNP APCH - GPS.

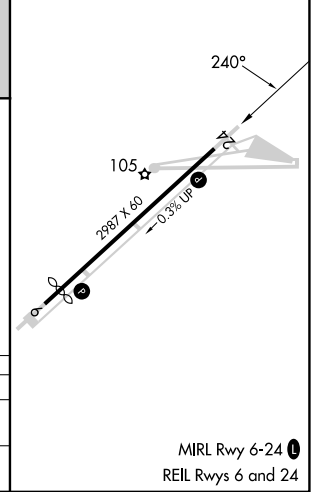
▼ Rwy 24 helicopter visibility reduction below 1 SM NA.  
 ▲ NA Straight-in Rwy 24 NA at night, Circling Rwy 24 NA at night.

MISSED APPROACH: Climb to 2000 direct UZSOR and hold.

AWOS-AV <b>122.8</b>	MC GUIRE APP CON <b>126,475 363,8</b>	GCO <b>121.725</b>	UNICOM <b>122.8 (CTAF)</b>
-------------------------	------------------------------------------	-----------------------	-------------------------------



ELEV 42	TDZE 42
---------	---------



CATEGORY	A	B	C	D
LNVA MDA	520-1	478 (500-1)	NA	
CIRCLING	540-1 498 (500-1)	620-1 578 (600-1)	NA	

MIRL Rwy 6-24  
REIL Rwy 6 and 24

NE-2, 11 JUN 2026 to 09 JUL 2026

NE-2, 11 JUN 2026 to 09 JUL 2026