

|  |                        |   |
|--|------------------------|---|
| WAAS<br>CH <b>93732</b><br><b>W32A</b> | APP CRS<br><b>322°</b> | Rwy Ldg<br>TDZE <b>1130</b><br>Apt Elev <b>1136</b> |
|--|------------------------|---|

# RNAV (GPS) RWY 32

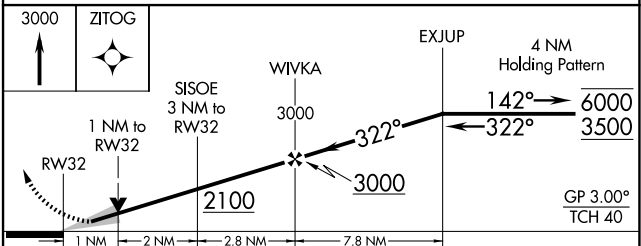
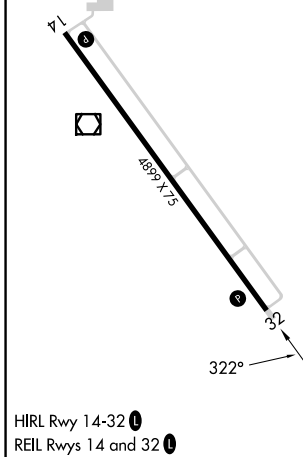
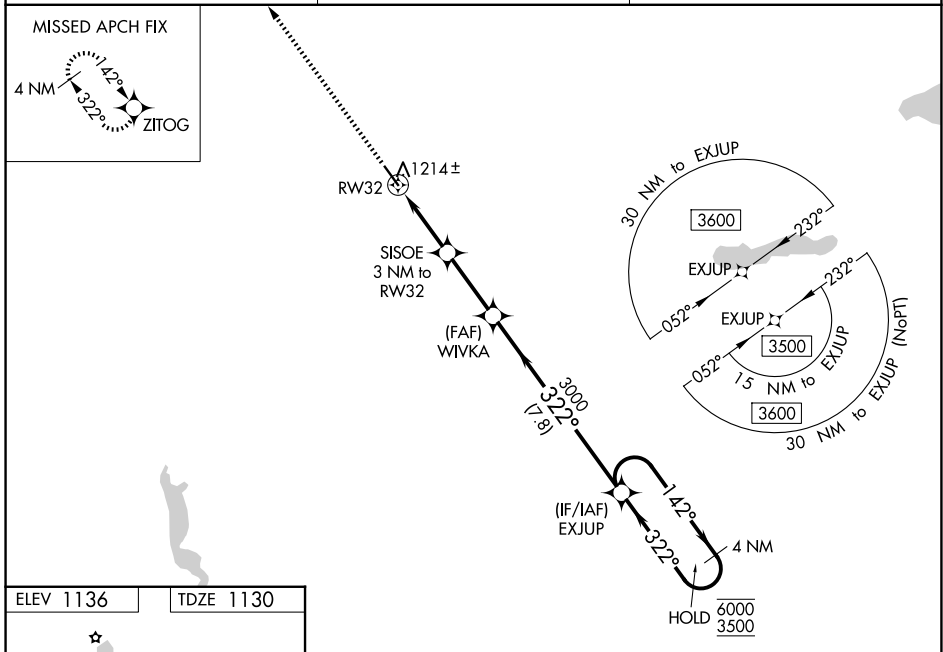
MORRIS MUNI/CHARLIE SCHMIDT FLD (MOX)

RNP APCH - GPS.

**⚠** Baro-VNAV and VDP NA when using BBB altimeter setting. For uncompensated Baro-VNAV systems, LNAV/VNAV NA below -17°C or above 54°C. When local altimeter setting not received, use BBB altimeter setting and increase LPV DA to 1380 feet and LNAV/VNAV DA to 1477 feet. Increase all MDAs 60 feet and visibility LNAV Cat C ½ SM and visibility Circling Cat C ¼ SM.

MISSED APPROACH: Climb to 3000 direct ZITOG and hold.

|                          |  |                                 |
|--------------------------|--|---------------------------------|
| AWOS-3PT<br><b>118.6</b> | MINNEAPOLIS CENTER<br><b>126.1 269.2</b> | UNICOM<br><b>122.8 (CTAF) ①</b> |
|--------------------------|--|---------------------------------|



| CATEGORY     | A           | B           | C           | D  |
|--------------|-------------|-------------|-------------|----|
| LPV DA       |             | 1330-1      | 200 (200-1) | NA |
| LNAV/VNAV DA |             | 1419-1      | 289 (300-1) | NA |
| LNAV MDA     |             | 1480-1      | 350 (400-1) | NA |
| CIRCLING     | 1560-1      | 1600-1      | 1860-2      | NA |
|              | 424 (500-1) | 464 (500-1) | 724 (800-2) |    |

NC-1, 11 JUN 2026 to 09 JUL 2026

NC-1, 11 JUN 2026 to 09 JUL 2026