

WAAS CH <b>78403</b> <b>W24A</b>	APP CRS <b>234°</b>	Rwy Idg TDZE Apt Elev	<b>5504</b> <b>847</b> <b>859</b>
--	------------------------	-----------------------------	---

# RNAV (GPS) RWY 24

ALBERTUS (F'EP)

RNP APCH - GPS.

**⚠** For uncompensated Baro-VNAV systems, LNAV/VNAV NA below -16°C or above 54°C.  
**⚠** When local altimeter setting not received, use Chicago/Rockford altimeter setting: increase LPV and LNAV/VNAV DA to 1164 feet; increase all MDA 80 feet and LNAV visibility Cat C/D and Circling Cat C/D visibility ¼ SM. Baro-VNAV and VDP NA when using Chicago/Rockford altimeter setting. Circling NA to Rwy's 13, 18, 31, 36. For inop ALS, increase LNAV/VNAV all Cats visibility to ¾ SM. For inop ALS, when using Chicago/Rockford altimeter setting, increase LPV and LNAV/VNAV all Cats visibility to ¾ SM and LNAV C/D visibility to 1 ½ SM.

MALSR



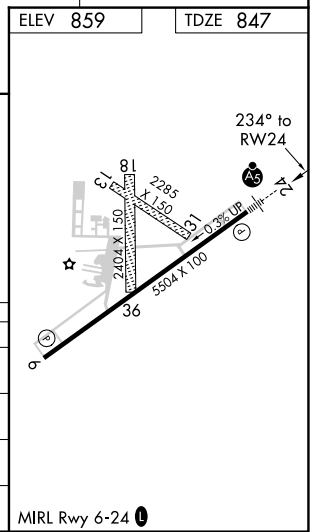
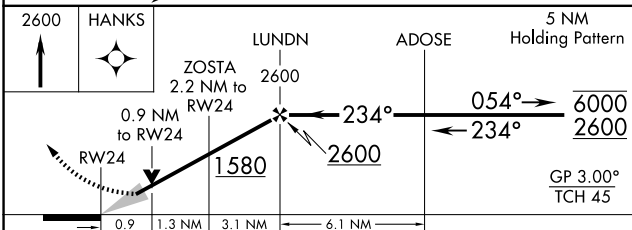
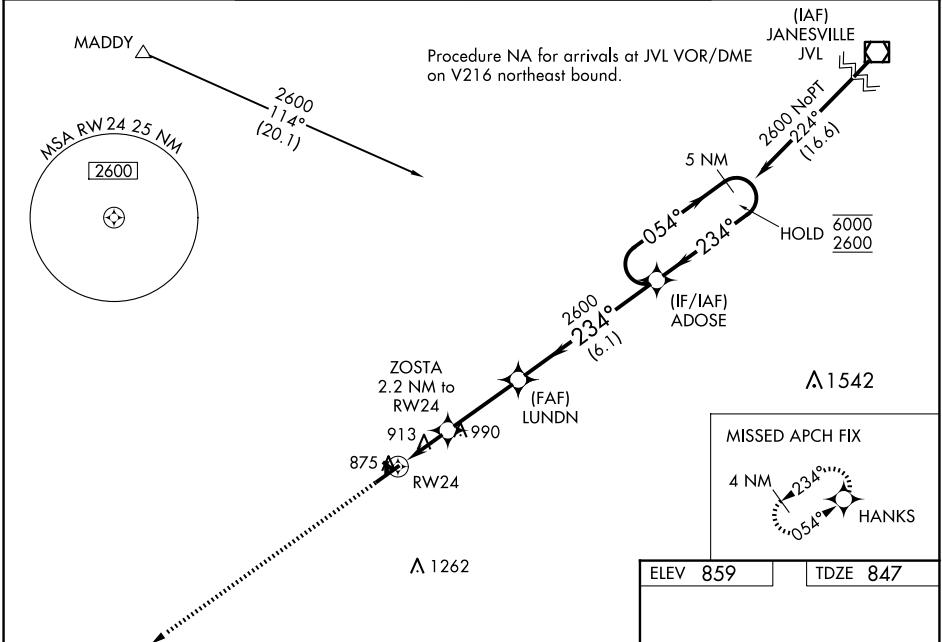
MISSED APPROACH: Climb to 2600 direct HANKS and hold.

AWOS-3  
**120.525**

ROCKFORD APP CON  
**126.0 327.0**

CLNC DEL  
**121.85**

UNICOM  
**122.8** (CTAF) **Ⓛ**



CATEGORY	A	B	C	D
LPV DA		1097-½	250 (300-½)	
LNAV/VNAV DA		1097-½	250 (300-½)	
LNAV MDA		1180-½	333 (400-½)	
CIRCLING	1320-1 461 (500-1)	1400-1 541 (600-1)	1440-1½ 581 (600-1½)	1620-2½ 761 (800-2½)

EC-3, 11 JUN 2026 to 09 JUL 2026

EC-3, 11 JUN 2026 to 09 JUL 2026