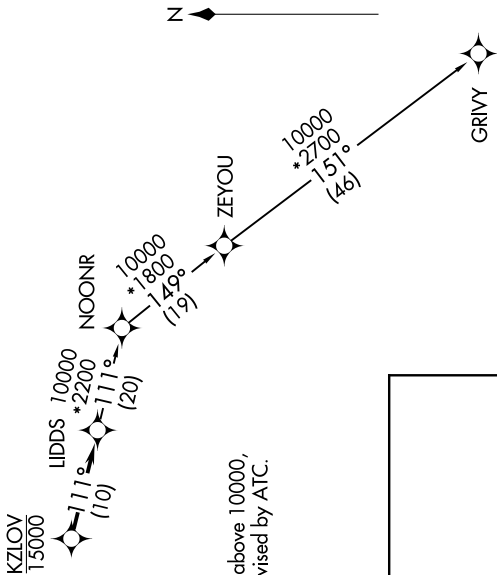
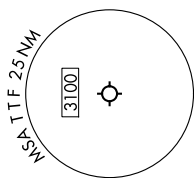


EC-1, 11 JUN 2026 to 09 JUL 2026

DETROIT DEP CON  
134.3 284.0  
AWOS-3P  
119,075  
CTAF  
122.7

RNAV 1 - DME/DME/IRU or GPS.  
RADAR required.  
RADAR required for non-GPS equipped aircraft.

**TOP ALTITUDE:  
ASSIGNED BY ATC**



TAKEOFF MINIMUMS:  
Rwys 3, 21: Standard.

NOTE: Turbojet departures at/above 10000,  
maintain 280K until advised by ATC.

**DEPARTURE ROUTE DESCRIPTION**

**TAKEOFF RUNWAY 3:** Climb on heading 027° or as assigned by ATC, thence....  
**TAKEOFF RUNWAY 21:** Climb on heading 208° or as assigned by ATC, thence....

....for RADAR vectors to cross KZLOV at or below 15000, then on track 111° to LIDDS,  
then on (transition). Maintain ATC assigned altitude, expect filed altitude 10 minutes  
after departure.

GRIVY TRANSITION (LIDDS4.GRIVY):

NOTE: Chart not to scale.

EC-1, 11 JUN 2026 to 09 JUL 2026