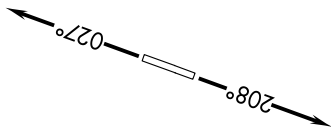


EC-1, 11 JUN 2026 to 09 JUL 2026

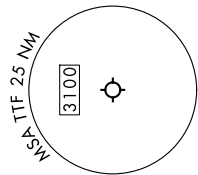
DETROIT DEP CON  
134.3 284.0  
AWOS-3P  
119.075  
CTAF  
122.7

**TOP ALTITUDE:  
ASSIGNED BY ATC**

RNAV-1 DME/DME/IRU or GPS.  
RADAR required.



TAKEOFF MINIMUMS:  
Rwys 3, 21: Standard.



**DEPARTURE ROUTE DESCRIPTION**

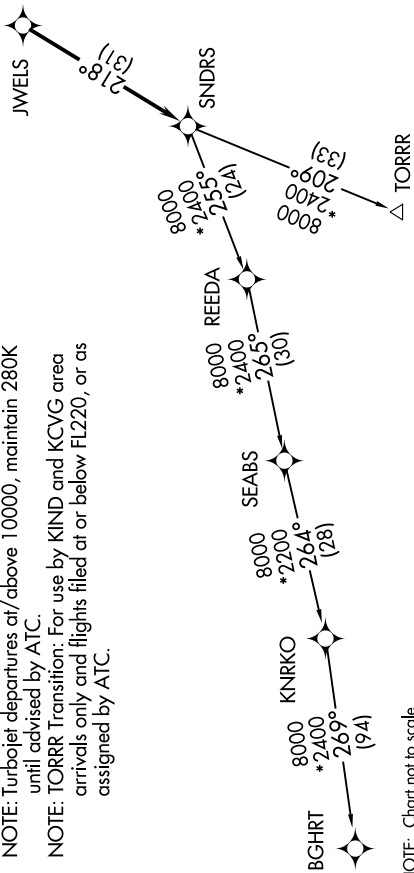
TAKEOFF RUNWAY 3: Climb on heading 027° or as assigned by ATC, thence....  
TAKEOFF RUNWAY 21: Climb on heading 208° or as assigned by ATC, thence....

....for RADAR vectors to JWELS, then on track 218° to SNDRS, then on (transition). Maintain ATC assigned altitude, expect filed altitude 10 minutes after departure.

BGHR T TRANSITION (SNDRS3.BGHR T):  
TORR T TRANSITION (SNDRS3.TORR T):

NOTE: Turbojet departures at/above 10000, maintain 280K until advised by ATC.

NOTE: TORR T Transition: For use by KIND and KCVG area arrivals only and flights filed at or below FL220, or as assigned by ATC.



NOTE: Chart not to scale.

EC-1, 11 JUN 2026 to 09 JUL 2026