

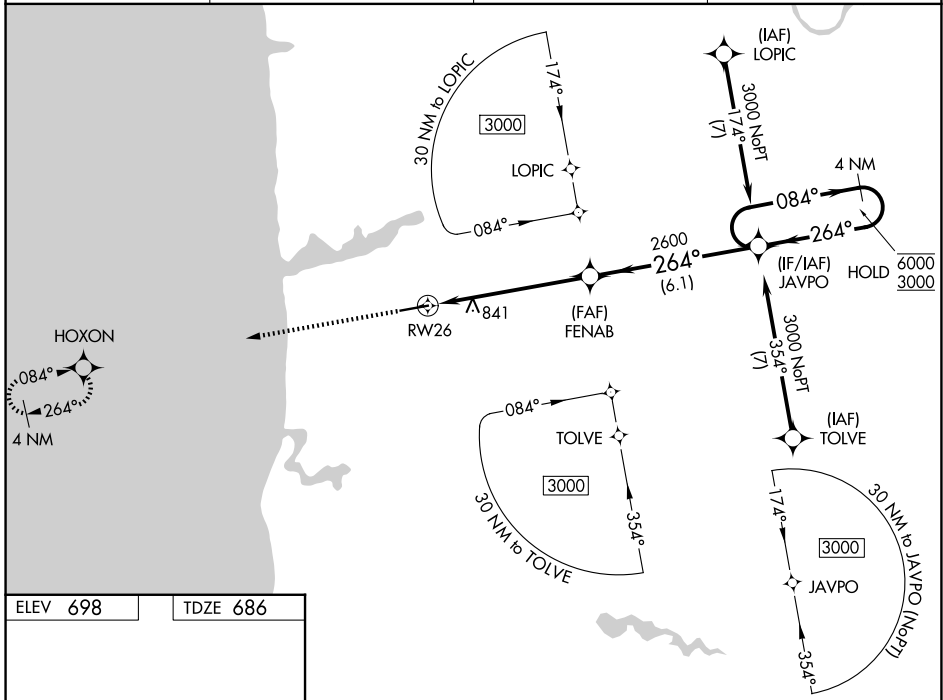
WAAS CH 53402 W26A	APP CRS 264°	Rwy Ldg TDZE 686 Apt Elev 698
--	------------------------	---

RNAV (GPS) RWY 26

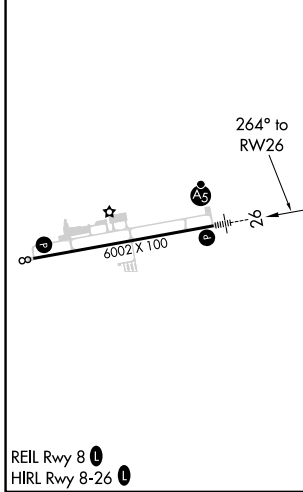
WEST MICHIGAN RGNL (BIV)

RNP APCH. For uncompensated Baro-VNAV systems, LNAV/VNAV NA below -16°C or above 54°C. For inoperative ALS, increase LNAV/VNAV all Cats visibility to 1 SM; increase LNAV Cat C visibility to 1 1/2 SM.	MALSR 	MISSED APPROACH: Climb to 2700 direct HOXON and hold.
---	-----------	--

ASOS 119.025	GREAT LAKES APP CON* 133.825 290.35	CLNC DEL 123.95	UNICOM 123.05 (CTAF)
------------------------	---	---------------------------	--------------------------------



ELEV 698	TDZE 686
----------	----------



2700	HOXON	*LNAV only	FENAB	JAVPO	4 NM Holding Pattern
↑		*1.2 NM to RW26	2600	2600	084° → 6000 ← 264° 3000 GP 3.00° TCH 32
		1.2	4.7 NM	6.1 NM	
CATEGORY	A	B	C	D	
LPV DA	886-1/2	200 (200-1/2)		NA	
LNAV/VNAV DA	1040-5/8	354 (400-5/8)		NA	
LNAV MDA	1100-1/2	414 (500-1/2)	1100-3/4 414 (500-3/4)	NA	
CIRCLING	1200-1 502 (600-1)	1240-1 542 (600-1)	1240-1 1/2 542 (600-1 1/2)	NA	

EC-1, 11 JUN 2026 to 09 JUL 2026

EC-1, 11 JUN 2026 to 09 JUL 2026