

WAAS CH 70414 W36A	APP CRS 008°	Rwy Ldg TDZE 226 Apt Elev 226
--	------------------------	---

RNAV (GPS) RWY 36

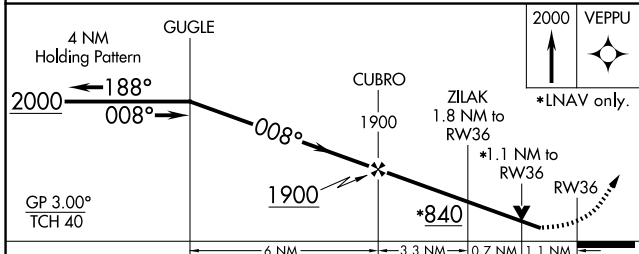
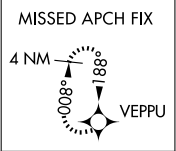
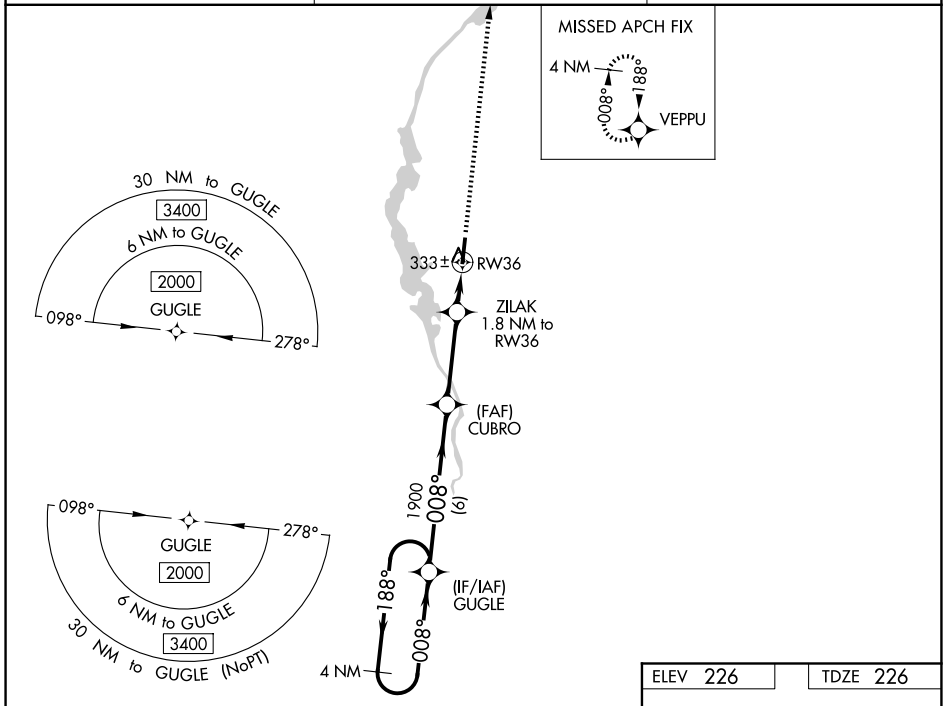
MONROE COUNTY (M40)

RNP APCH.

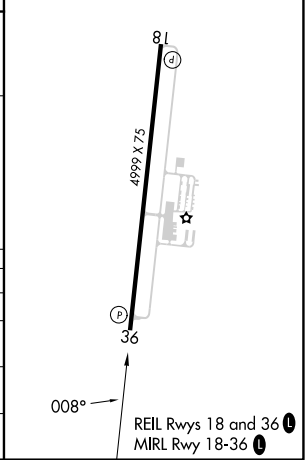
For uncompensated Baro-VNAV systems, LNAV/VNAV NA below -15°C or above 54°C. Rwy 36 helicopter visibility reduction below 3/4 SM NA.

MISSED APPROACH: Climb to 2000 direct VEPPU and hold.

AWOS-3P 118.475	COLUMBUS APP CON ★ 126.075 239.25	UNICOM 122.8 (CTAF) 0
---------------------------	---	---------------------------------



ELEV 226	TDZE 226
----------	----------



CATEGORY	A	B	C	D
LPV DA		506-7/8	280 (300-7/8)	
LNAV/VNAV DA		624-11/8	398 (400-11/8)	
LNAV MDA		600-1	374 (400-1)	
CIRCLING	660-1 434 (500-1)	680-1 454 (500-1)	820-11/2 594 (600-11/2)	860-2 634 (700-2)

SC-4, 11 JUN 2026 to 09 JUL 2026

SC-4, 11 JUN 2026 to 09 JUL 2026