

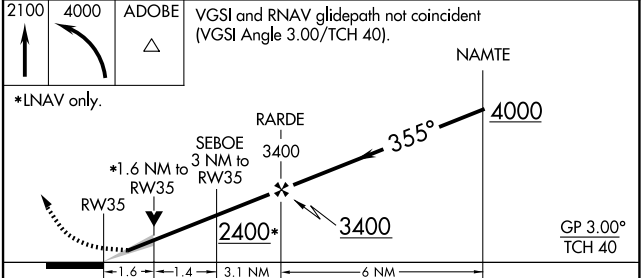
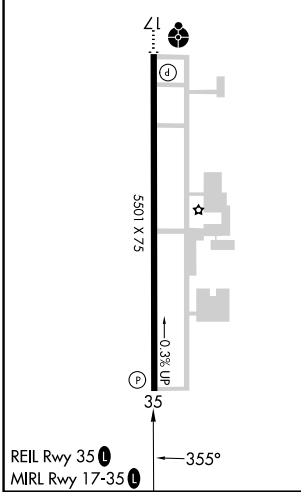
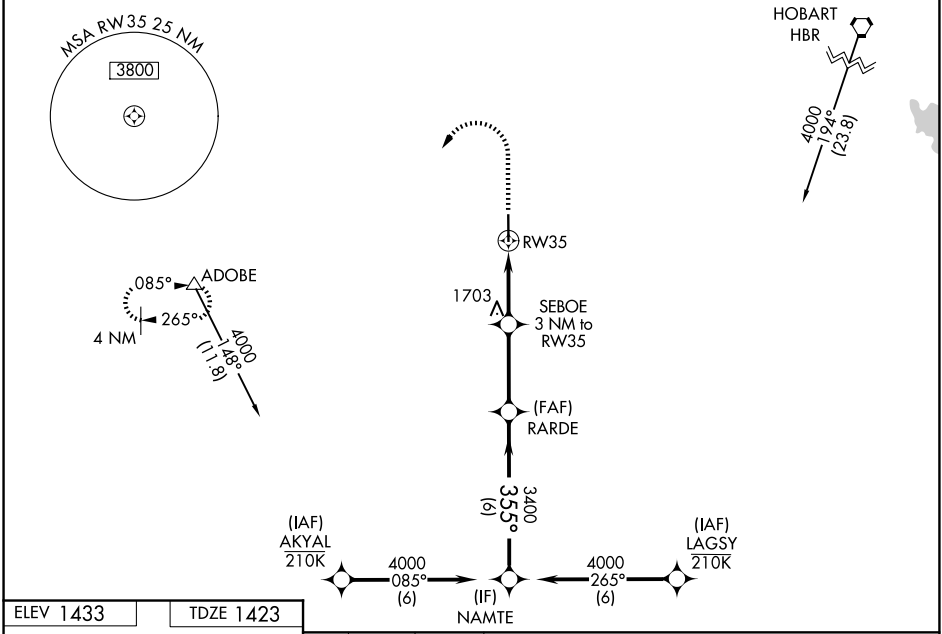
WAAS CH 93914 W35A	APP CRS 355°	Rwy Ldg TDZE Apt Elev	5501 1423 1433
--	------------------------	-----------------------------	---

RNAV (GPS) RWY 35

ALTUS/QUARTZ MOUNTAIN RGNL (A.X.S)

RNP APCH.	MISSED APPROACH: Climb to 2100 then climbing left turn to 4000 direct ADOBE and hold.
<p>⚠ For uncompensated Baro-VNAV systems, LNAV/VNAV NA below -17°C or above 54°C.</p>	

AWOS-3PT 118.825	ALTUS APP CON* 125.1 353.7	UNICOM 122.8 (CTAF) 0
----------------------------	--------------------------------------	---------------------------------



CATEGORY	A	B	C	D
LPV DA	1673-7/8		250 (300-7/8)	NA
LNAV/VNAV DA	1673-7/8		250 (300-7/8)	NA
LNAV MDA	1960-1	537 (600-1)	1960-1 1/2 537 (600-1 1/2)	NA
CIRCLING	1960-1	527 (600-1)	2020-1 1/2 587 (600-1 1/2)	NA

SC-1, 11 JUN 2026 to 09 JUL 2026

SC-1, 11 JUN 2026 to 09 JUL 2026