

WAAS CH <b>48838</b> <b>W20A</b>	APP CRS <b>201°</b>	Rwy Ldg TDZE Apt Elev	<b>3763</b> <b>765</b> <b>765</b>
--	------------------------	-----------------------------	---

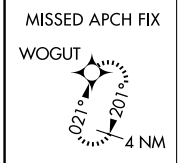
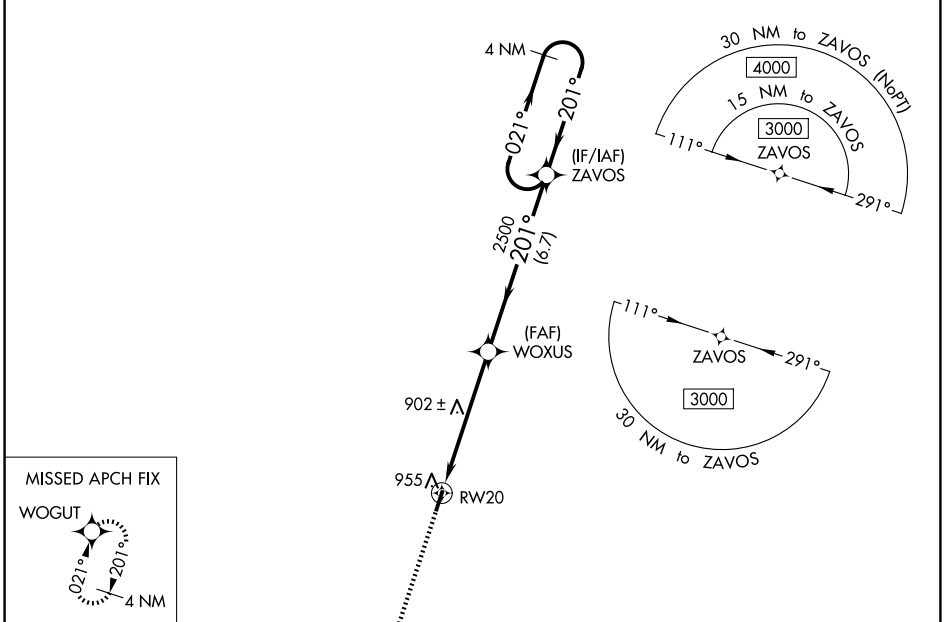
# RNAV (GPS) RWY 20

CENTERVILLE MUNI (GHM)

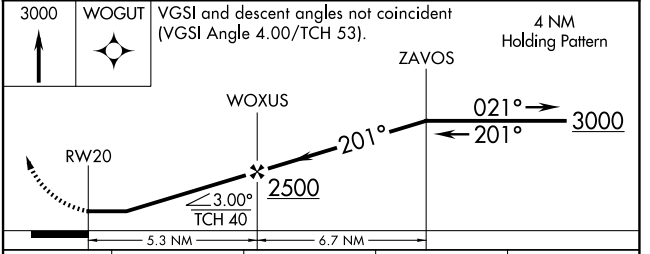
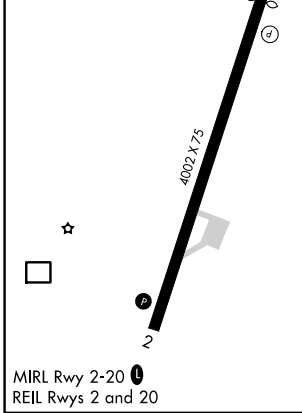
▼ Obtain local altimeter setting on CTAF, when not received, use Columbia/Mount Pleasant altimeter setting and increase all MDA 80 feet. Increase LP Cats C and D visibility ¼ mile; LNAV Cats C and D ½ mile; Circling Cat D ¼ mile. DME/DME RNP-0.3 NA.  
 ▲ NA Procedure NA at night. Helicopter visibility reduction below 1 SM NA.

MISSED APPROACH:  
 Climb to 3000 direct WOGUT and hold.

NASHVILLE APP CON <b>119.35 372.0</b>	UNICOM <b>122.8 (CTAF) 0</b>
--	---------------------------------



ELEV 765	TDZE 765
----------	----------



CATEGORY	A	B	C	D
LP MDA	1160-1	395 (400-1)	1160-1½	395 (400-1½)
LNAV MDA	1220-1	455 (500-1)	1220-1¾	455 (500-1¾)
CIRCLING	1260-1	495 (500-1)	1280-1½ 515 (600-1½)	1520-2½ 755 (800-2½)

SE-1, 11 JUN 2026 to 09 JUL 2026

SE-1, 11 JUN 2026 to 09 JUL 2026