

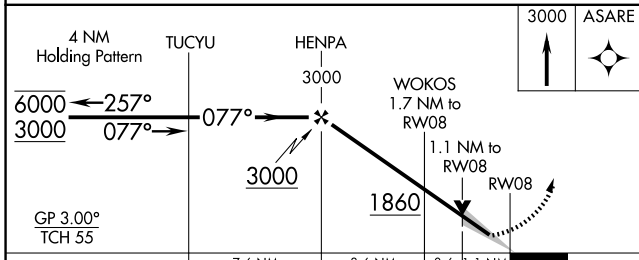
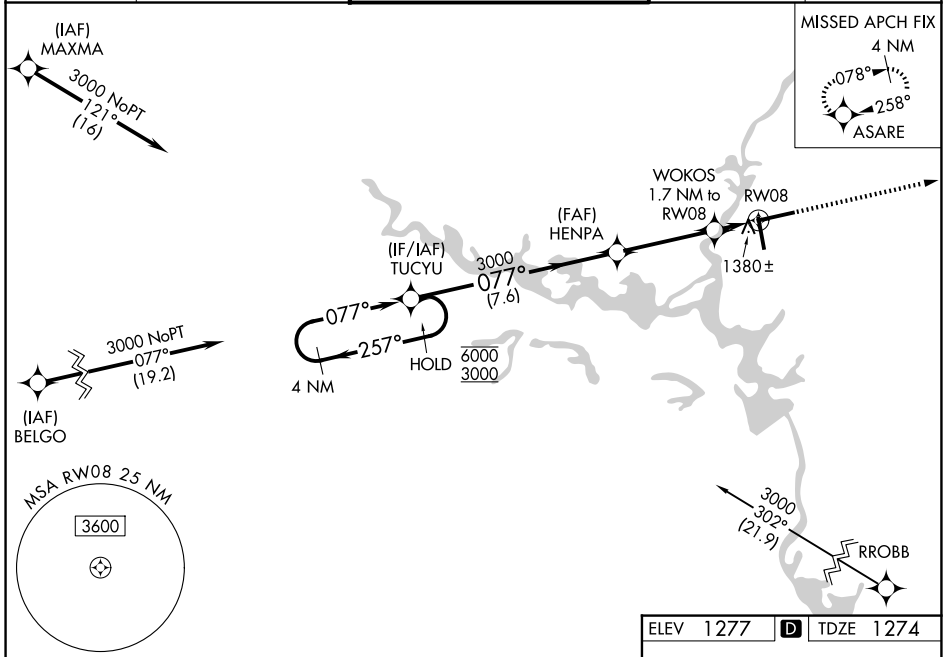
WAAS CH <b>42820</b> <b>W08A</b>	APP CRS <b>077°</b>	Rwy Ldg TDZE Apt Elev	<b>7724</b> <b>1274</b> <b>1277</b>
--	------------------------	-----------------------------	---

# RNAV (GPS) RWY 8

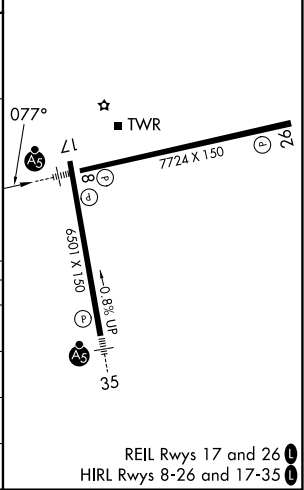
CENTRAL WISCONSIN (CWA)

RNP APCH - GPS.		MALSR	MISSED APPROACH: Climb to 3000 direct ASARE and hold.
<p>For uncompensated Baro-VNAV systems, LNAV/VNAV NA below -17°C or above 54°C. For inop ALS, increase LNAV Cat C and D visibility to 1½ SM.</p>			

ATIS <b>127.45</b>	MINNEAPOLIS CENTER <b>124.4 317.7</b>	CWA TOWER ★ <b>119.75 (CTAF) 360.7</b>	GND CON <b>121.9 360.7</b>	UNICOM <b>122.95</b>
-----------------------	--	---	-------------------------------	-------------------------



ELEV 1277	D	TDZE 1274
-----------	---	-----------



CATEGORY	A	B	C	D
LPV DA		1474-½	200 (200-½)	
LNAV/VNAV DA		1601-½	327 (400-½)	
LNAV MDA	1640-½	366 (400-½)	1640-¾	366 (400-¾)
CIRCLING	1740-1	463 (500-1)	1740-1½	1840-2
			463 (500-1½)	563 (600-2)

EC-3, 11 JUN 2026 to 09 JUL 2026

EC-3, 11 JUN 2026 to 09 JUL 2026