

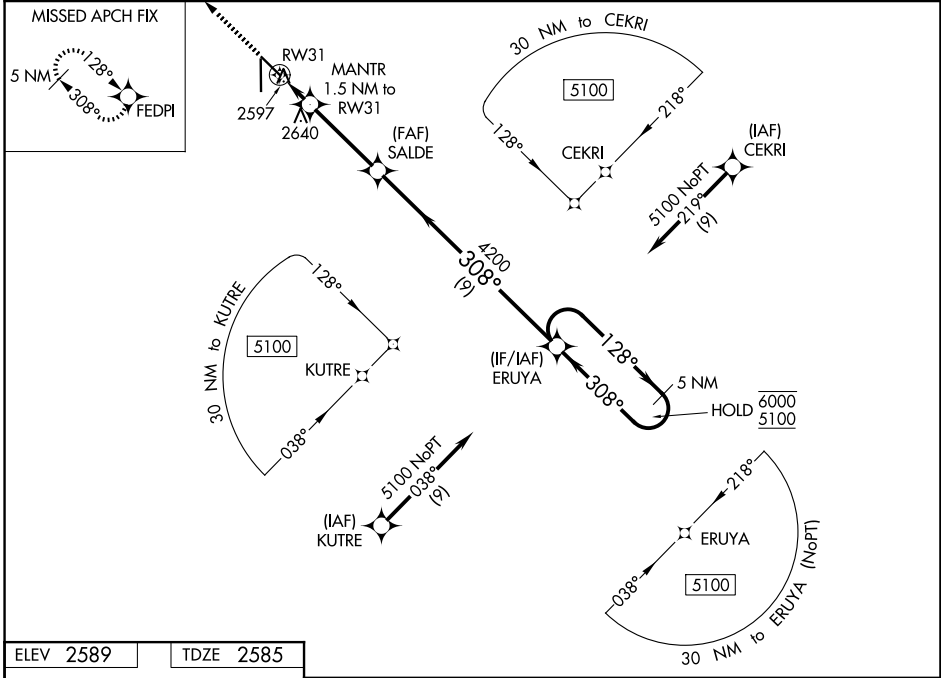
WAAS CH <b>86507</b> <b>W31A</b>	APP CRS <b>308°</b>	Rwy Ldg TDZE Apt Elev	<b>5501</b> <b>2585</b> <b>2589</b>
--	------------------------	-----------------------------	---

# RNAV (GPS) RWY 31

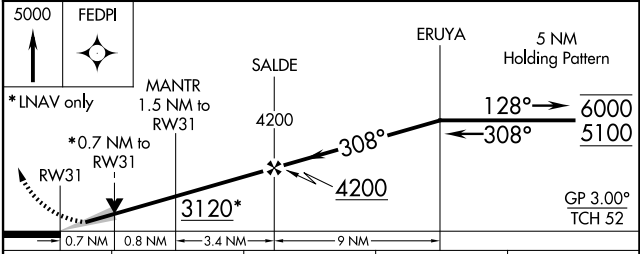
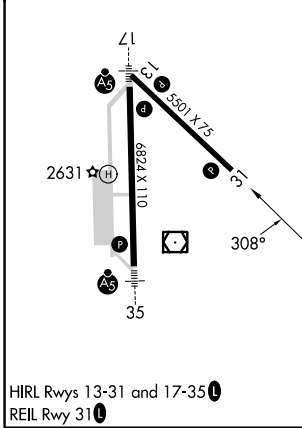
AINSWORTH RGNL (ANW)

RNP APCH.	MISSED APPROACH: Climb to 5000 direct FEDPI and hold.
<p>For uncompensated Baro-VNAV systems, LNAV/VNAV NA below -20°C or above 54°C.</p>	

AWOS-3 <b>118,325</b>	DENVER CENTER <b>127,95 338.2</b>	UNICOM <b>122.8 (CTAF) 1</b>
--------------------------	--------------------------------------	---------------------------------



ELEV <b>2589</b>	TDZE <b>2585</b>
------------------	------------------



CATEGORY	A	B	C	D
LPV DA		2785-1	200 (200-1)	
LNAV/VNAV DA		2835-1	250 (300-1)	
LNAV MDA		2860-1	275 (300-1)	
CIRCLING	3000-1 411 (500-1)	3040-1 451 (500-1)	3040-1½ 451 (500-1½)	3200-2 611 (700-2)

NC-2, 11 JUN 2026 to 09 JUL 2026

NC-2, 11 JUN 2026 to 09 JUL 2026