

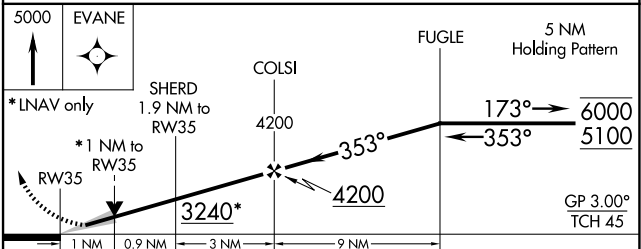
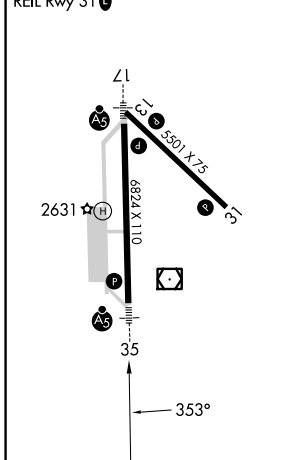
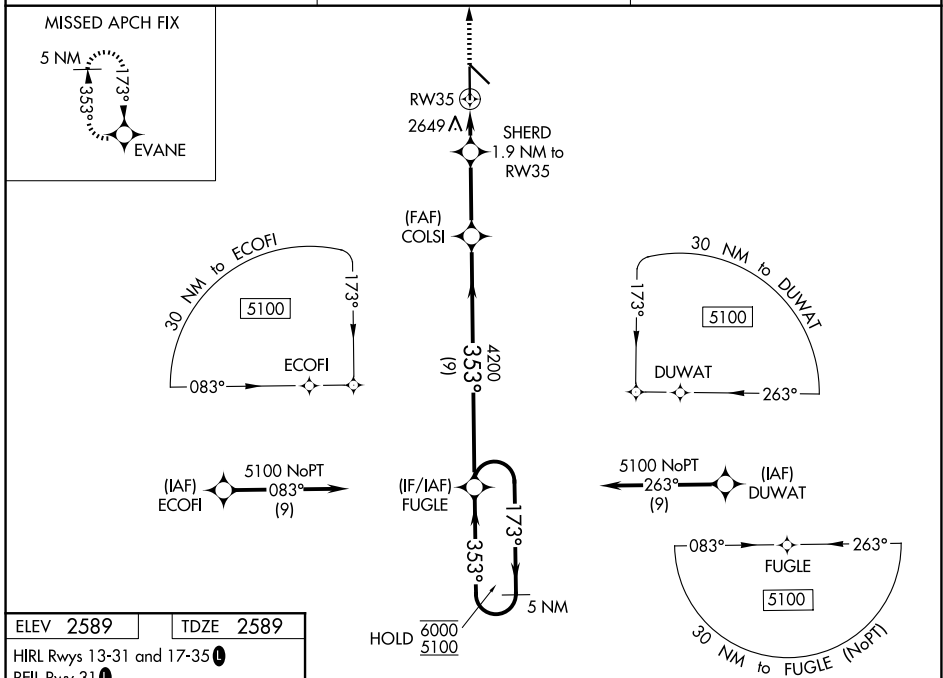
WAAS CH 81917 W35A	APP CRS 353°	Rwy Ldg TDZE Apt Elev	6824 2589 2589
--	------------------------	-----------------------------	---

RNAV (GPS) RWY 35

AINSWORTH RGNL (A.N.W)

RNP APCH.	MALSR 	MISSED APPROACH: Climb to 5000 direct EVANE and hold.
<p>▽ For uncompensated Baro-VNAV systems, LNAV/VNAV NA below -20°C or above 54°C. For inop ALS, increase LNAV/VNAV all Cats visibility to 3/4 SM and LNAV Cats C and D visibility to 1 SM.</p>		

AWOS-3 118.325	DENVER CENTER 127.95 338.2	UNICOM 122.8 (CTAF) ①
--------------------------	--------------------------------------	---------------------------------



CATEGORY	A	B	C	D
LPV DA		2789-1/2	200 (200-1/2)	
LNAV/VNAV DA		2839-1/2	250 (300-1/2)	
LNAV MDA	2960-1/2	371 (400-1/2)	2960-5/8	371 (400-5/8)
CIRCLING	3000-1 411 (500-1)	3040-1 451 (500-1)	3040-1 1/2 451 (500-1 1/2)	3200-2 611 (700-2)

NC-2, 11 JUN 2026 to 09 JUL 2026

NC-2, 11 JUN 2026 to 09 JUL 2026