

WAAS CH <b>69319</b> <b>W36A</b>	APP CRS <b>360°</b>	Rwy Idg <b>7004</b> TDZE <b>120</b> Apt Elev <b>126</b>
--	------------------------	---

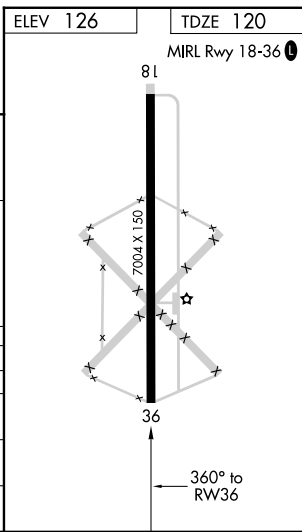
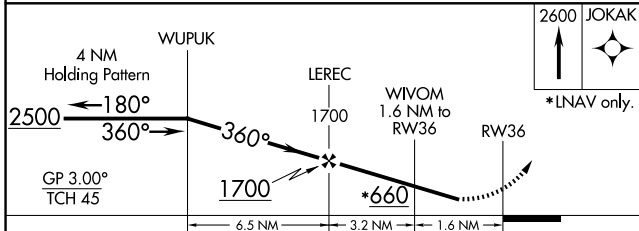
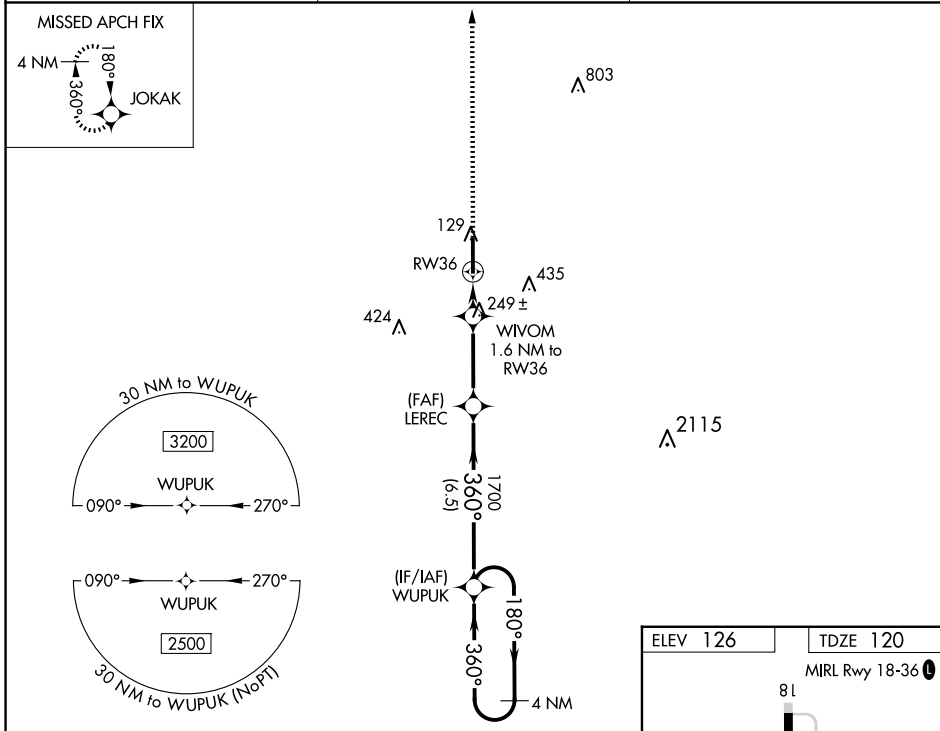
# RNAV (GPS) RWY 36

INDIANOLA MUNI (IDL)

**▼** **▲** **NA** Night landing: Rwy 18 NA. Baro-VNAV NA. DME/DME RNP-0.3 NA. Helicopter visibility reduction below 3/4 SM NA. Use Greenville altimeter setting, when not received, use Greenwood altimeter setting and increase LPV DA to 507 and all Cats visibility 1/8 SM, increase LNAV/VNAV DA to 465 and all Cats visibility 1/8 SM, increase all MDA 40 feet, increase LNAV Cat C/D and Circling Cat C/D visibility 1/4 SM.

MISSED APPROACH: Climb to 2600 direct JOKAK and hold.

GLH ASOS <b>125.525</b>	MEMPHIS CENTER <b>135.875 269.35</b>	UNICOM <b>122.8 (CTAF) 0</b>
----------------------------	---	---------------------------------



CATEGORY	A	B	C	D
LPV DA		470-1 1/8	350 (400-1 1/8)	
LNAV/VNAV DA		428-1	308 (400-1)	
LNAV MDA	540-1	420 (500-1)	540-1 1/8	420 (500-1 1/8)
CIRCLING	580-1 454 (500-1)	600-1 474 (500-1)	840-2 714 (800-2)	840-2 1/4 714 (800-2 1/4)

SC-4, 11 JUN 2026 to 09 JUL 2026

SC-4, 11 JUN 2026 to 09 JUL 2026