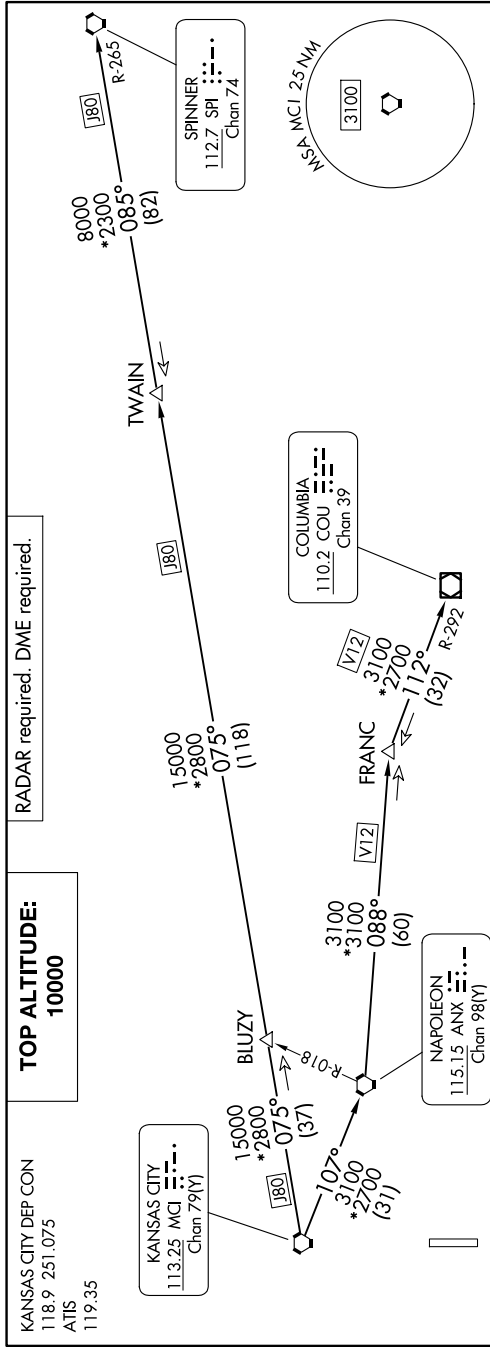


LAKES FIVE DEPARTURE

AL-5687 (FAA)

OLATHE, KANSAS

9202 201r 60 of 92020200 NR 14 7-ON



DEPARTURE ROUTE DESCRIPTION

TAKEOFF ALL RUNWAYS: Climb on assigned heading for RADAR vectors to appropriate route. Maintain 10000 or as assigned by ATC. Expect filed altitude 10 minutes after departure.

COLUMBIA TRANSITION [LAKES5.COJ]: From over MCI VORTAC on MCI R-107 to ANX VORTAC, then on ANX R-088 and COU R-292 to COU VOR/DME.

FRANC TRANSITION [LAKES5.FRANC]: From over MCI VORTAC on MCI R-107 to ANX VORTAC, then on ANX R-088 to FRANC.

SPINNER TRANSITION [LAKES5.SPI]: From over MCI VORTAC on MCI R-075 and SPI R-265 to TWAIN, then on SPI R-265 to SPI VORTAC.

TWAIN TRANSITION [LAKES5.TWAIN]: From over MCI VORTAC on MCI R-075 and SPI R-265 to TWAIN.

TOP ALTITUDE:
10000

RADAR required. DME required.

KANSAS CITY DEP CON
118.9 251.075
ATIS
119.35

KANSAS CITY
113.25 MCI
Chan 79V

BIUZY
15000 *2800
075°
(1118)

NAPOLEON
115.15 ANX
Chan 98V

FRANC
3100 *3100
088°
(60)

COLUMBIA
110.2 COU
Chan 39

SPINNER
112.7 SPI
Chan 74

TAKEOFF MINIMUMS
Rwys 18, 36: Standard.

NOTE: Chart not to scale.

LAKES FIVE DEPARTURE