

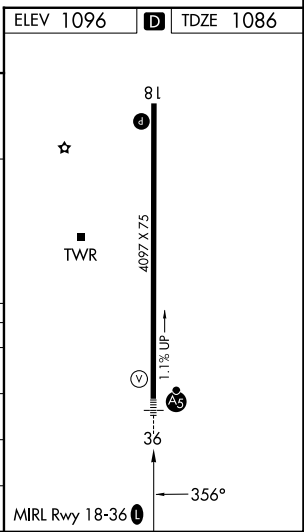
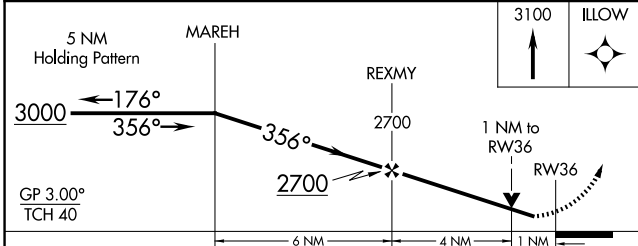
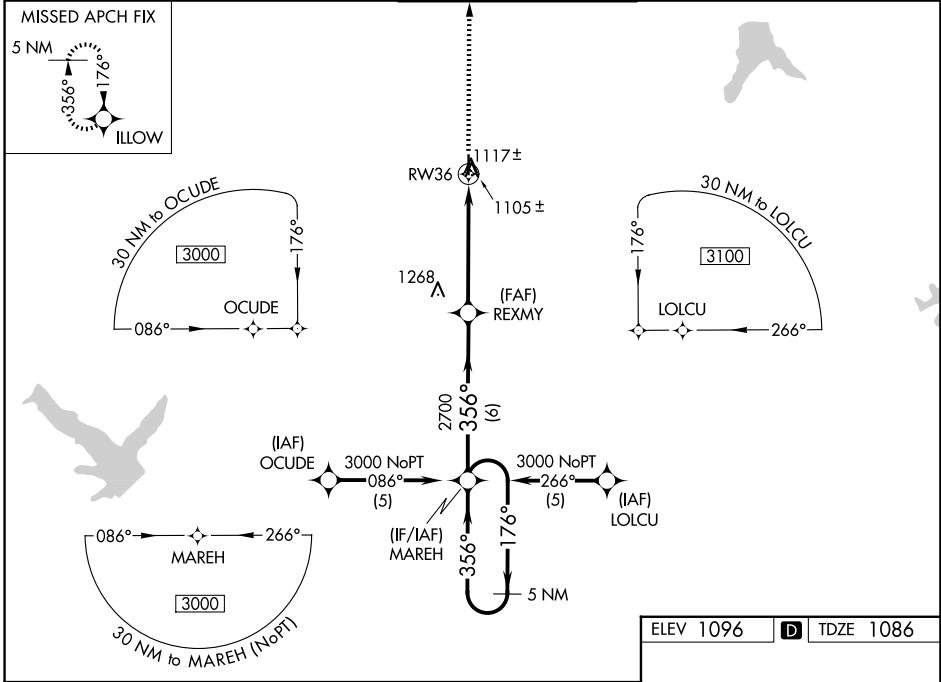
WAAS CH 82700 W36A	APP CRS 356°	Rwy Ldg 4097 TDZE 1086 Apt Elev 1096
--	------------------------	---

RNAV (GPS) RWY 36

JOHNSON COUNTY EXEC (OJC)

RNP APCH - GPS.	MALSR	MISSED APPROACH: Climb to 3100 direct ILLOW and hold.
<p>▼ For uncompensated Baro-VNAV systems, LNAV/VNAV NA below -17°C or above 54°C. Rwy 36 helicopter visibility reduction below ¾ SM NA. For inop ALS, increase LPV, LNAV/VNAV and LNAV all Cats visibility to 1 SM.</p>		

ATIS 119.35	KANSAS CITY APP CON 118.9 251.075	EXECUTIVE TOWER* 126.0 (CTAF) 225.4	GND CON 121.6	UNICOM 122.95
-----------------------	---	---	-------------------------	-------------------------



CATEGORY	A	B	C	D
LPV DA	1336-¾	250 (300-¾)		NA
LNAV/VNAV DA	1355-¾	269 (300-¾)		NA
LNAV MDA	1400-¾	314 (400-¾)		NA
CIRCLING	1620-1	524 (600-1)	1620-1½ 524 (600-1½)	NA

NC-2, 11 JUN 2026 to 09 JUL 2026

NC-2, 11 JUN 2026 to 09 JUL 2026