

WAAS CH 48836 W24A	APP CRS 240°	Rwy Ldg TDZE Apt Elev	6406 597 616
--	------------------------	-----------------------------	---

RNAV (GPS) RWY 24

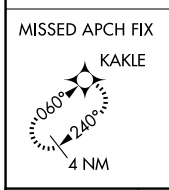
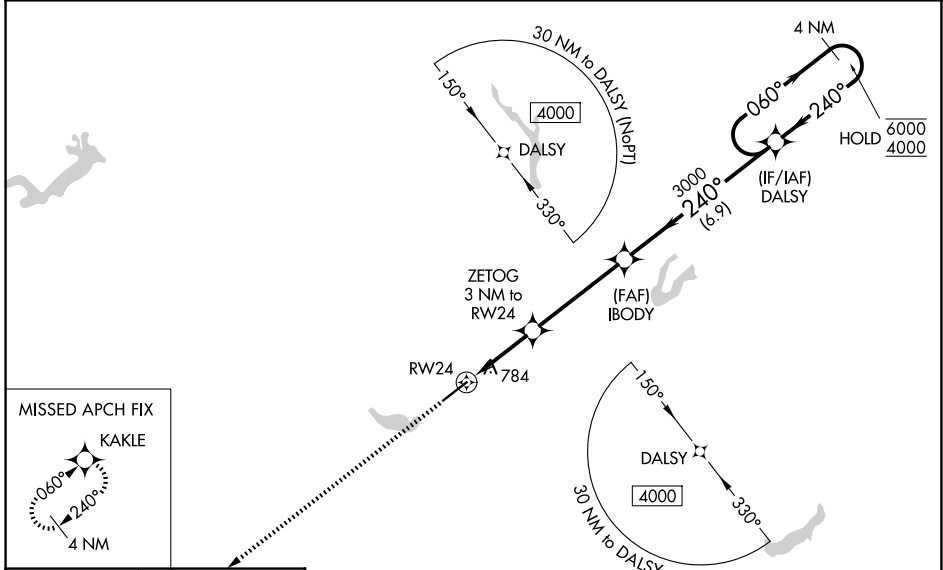
BURLINGTON/ALAMANCE RGNL (BUY)

RNP APCH - GPS.

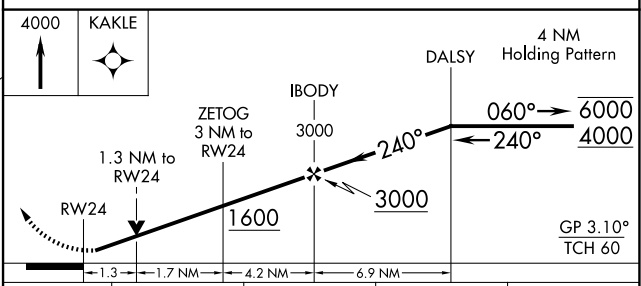
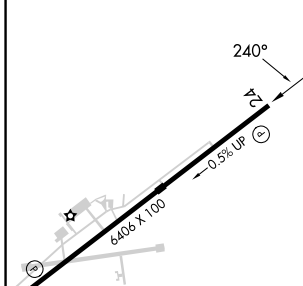
⚠ For uncompensated Baro-VNAV systems, LNAV/VNAV NA below -8°C or above 54°C. Baro-VNAV and VDP NA when using GSO altimeter setting. Helicopter visibility reduction below 3/4 SM NA. When local altimeter setting not received, use GSO altimeter setting and increase LPV DA to 1084 feet and all visibilities 1/4 SM. Increase LNAV/VNAV DA to 1157 feet and all visibilities 1/4 SM. Increase all MDAs 100 feet and LNAV visibility Cat C/D 1/4 SM, and Circling visibility Cat C 1/4 SM.

MISSED APPROACH:
Climb to 4000 direct KAKLE and hold, continue climb-in-hold to 4000.

ASOS 135.325	GREENSBORO APP CON 126.6 327.075	CLNC DEL 120.25	UNICOM 122.975(CTAF) 0
------------------------	--	---------------------------	----------------------------------



ELEV 616	TDZE 597
----------	----------



	A	B	C	D
LPV DA		987-1 1/4	390 (400-1 1/4)	
LNAV/VNAV DA		1060-1 3/8	463 (500-1 3/8)	
LNAV MDA	1060-1	463 (500-1)	1060-1 3/8	463 (500-1 3/8)
CIRCLING	1100-1	484 (500-1)	1520-2 3/4 904 (1000-2 3/4)	1520-3 904 (1000-3)

HIRL Rwy 6-24 **0**
REL Rws 6 and 24 **0**

SE-2, 11 JUN 2026 to 09 JUL 2026

SE-2, 11 JUN 2026 to 09 JUL 2026