

APP CRS	Rwy Ldg	<b>4323</b>
<b>206°</b>	TDZE	<b>946</b>
	Apt Elev	<b>946</b>

# RNAV (GPS) RWY 20

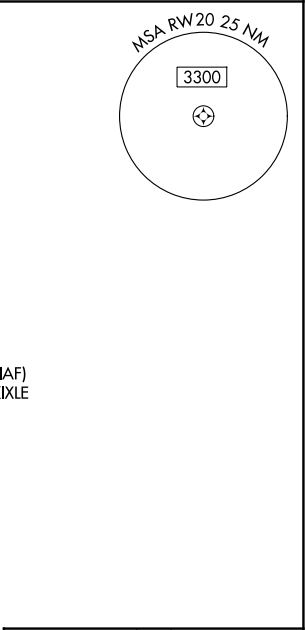
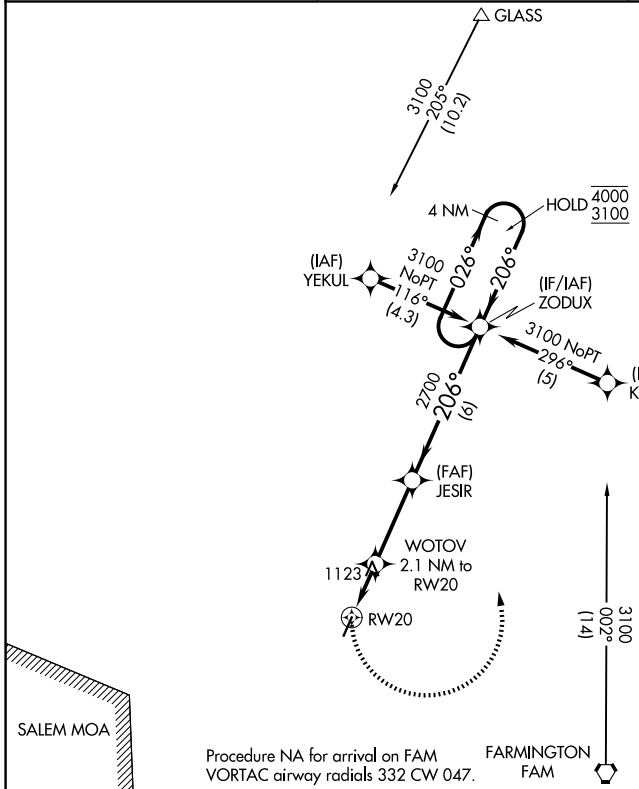
FARMINGTON RGNL (FAM)

RNP APCH - GPS.

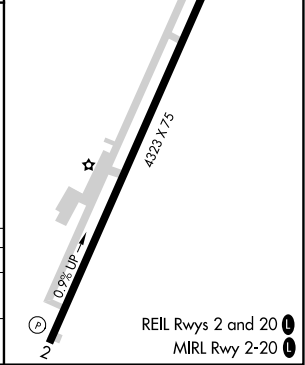
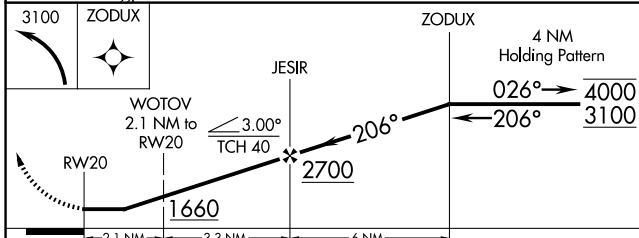
**▼** Rwy 20 helicopter visibility reduction below 1 SM NA. Straight-in Rwy 20 NA at night, Circling Rwy 20 NA at night. When local altimeter setting not received, use Sparta altimeter setting and increase all MDAs 160 feet.

MISSED APPROACH: Climbing left turn to 3100 direct ZODUX and hold.

AWOS-3PT <b>119.275</b>	KANSAS CITY CENTER <b>127.475 346.275</b>	UNICOM <b>122.8 (CTAF)</b>
----------------------------	--	-------------------------------



ELEV 946	TDZE 946
----------	----------



CATEGORY	A	B	C	D
LNVA MDA	1380-1	434 (500-1)		NA
CIRCLING	1460-1 514 (600-1)	1500-1 554 (600-1)		NA

NC-3, 11 JUN 2026 to 09 JUL 2026

NC-3, 11 JUN 2026 to 09 JUL 2026

REIL Rwy 2 and 20  
MIRL Rwy 2-20