

APP CRS	Rwy Ldg	6000
235°	TDZE	681
	Apt Elev	681

RNAV (GPS) RWY 24

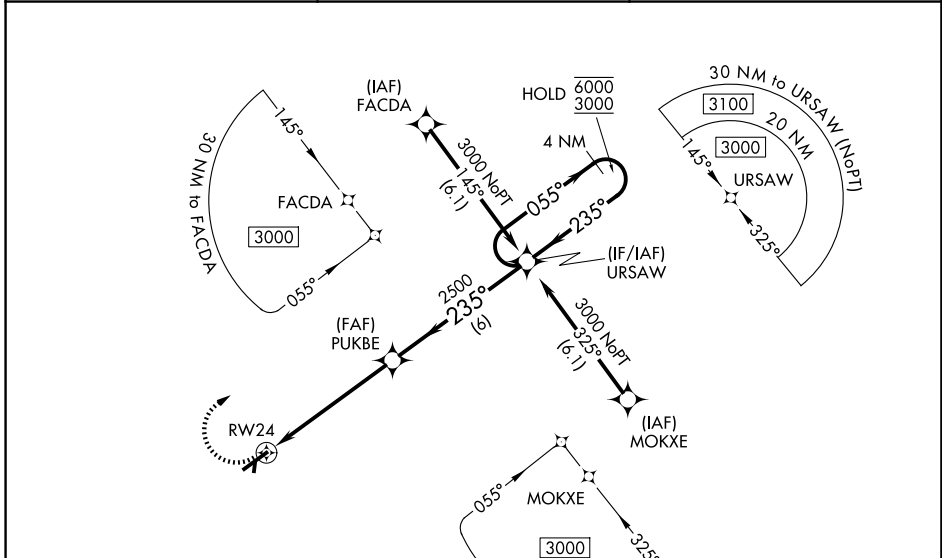
MAURY COUNTY RGNL (MRC)

RNP APCH - GPS.

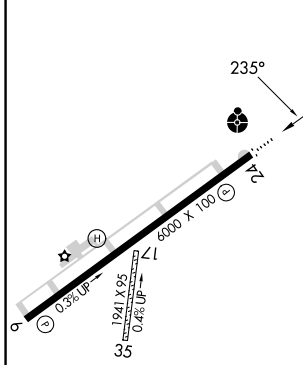
⚠ Inp table does not apply to LNAV Cats C and D. VDP NA when using BNA altimeter setting. Circling NA to Rwy 17 and 35. When local altimeter setting not received, use BNA altimeter setting and increase all MDAs 120 feet and LNAV visibility Cat C/D 3/8 SM, and Circling visibility Cat C 1/2 SM.

ODALS **⚠** MISSED APPROACH: Climbing right turn to 3000 direct URSAW and hold.

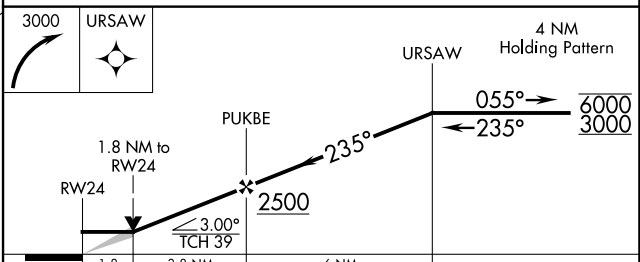
AWOS-3 128.625	MEMPHIS CENTER 125.85 379.25	UNICOM 122.8 (CTAF) ①
--------------------------	--	---------------------------------



ELEV 681	D	TDZE 681
----------	----------	----------



MIRL Rwy 6-24	REIL Rwy 6	REIL Rwy 24 ①
---------------	------------	---------------



CATEGORY	A	B	C	D
LNAV MDA	1300-3/4	619 (700-3/4)	1300-15/8	619 (700-15/8)
CIRCLING	1320-1 639 (700-1)	1360-1 679 (700-1)	1400-2 719 (800-2)	1620-3 939 (1000-3)

SE-1, 11 JUN 2026 to 09 JUL 2026

SE-1, 11 JUN 2026 to 09 JUL 2026