

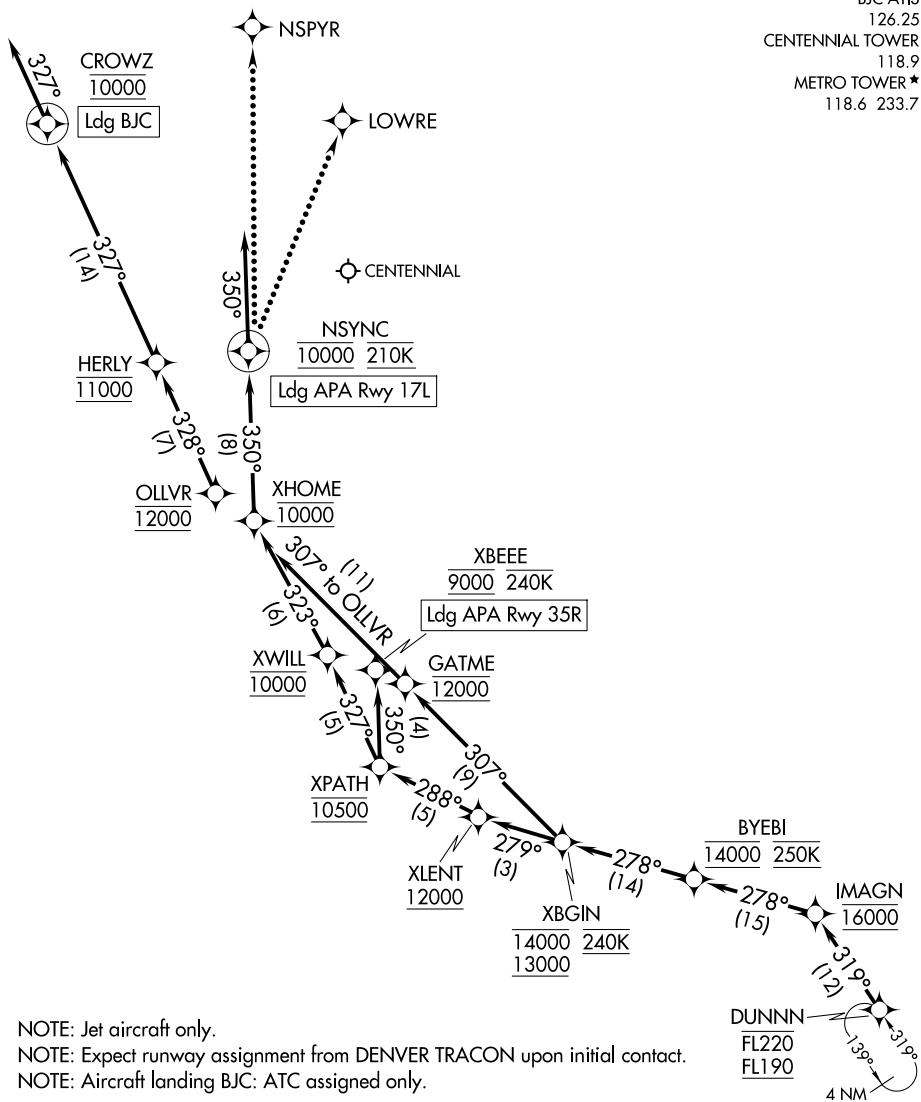
# DUNNN SIX ARRIVAL (RNAV) Arrival Routes

DENVER, COLORADO

ROCKY MOUNTAIN METRO

RNAV 1 - DME/DME/IRU or GPS.  
RADAR required.

DENVER CENTER  
133.4 377.175  
SPRINGS APP CON  
124.0 257.875  
DENVER APP CON  
128.45 251.075  
APA ATIS  
120.3  
BJC ATIS  
126.25  
CENTENNIAL TOWER  
118.9  
METRO TOWER \*  
118.6 233.7



NOTE: Jet aircraft only.  
NOTE: Expect runway assignment from DENVER TRACON upon initial contact.  
NOTE: Aircraft landing BJC: ATC assigned only.

NOTE: Chart not to scale.

(CONTINUED ON FOLLOWING PAGE)

# DUNNN SIX ARRIVAL (RNAV) Arrival Routes

DENVER, COLORADO

SW-1, 11 JUN 2026 to 09 JUL 2026

SW-1, 11 JUN 2026 to 09 JUL 2026